

BRODA[®]

Rehab Seating Solutions

Intuitive Care for Complex Conditions



matrix[®]
SEATING SERIES

Table of Contents

Tilt Wheelchairs Independent Users	1
Tilt Wheelchairs Caregiver Dependent	4
Shower Commode Wheelchairs.....	6
Seating	8
Back Supports.....	10
Head Supports	13
Accessories	14
Configure Your Rehab Wheelchair.....	15



BRODA®

When it comes to rehabilitation care, the right wheelchair and seating system can be the difference between a positive patient outcome and a poor one. Broda is committed to configuring wheelchairs that are tailored to the needs of each individual user.

With tilt functionality, dynamic rocking functions, removable arm supports for easy side transfers, and a variety of available leg supports and accessory options, our E1161 coded rehab wheelchairs are ideal for many use cases.

matrix® SEATING SERIES

The Matrix® Seating Series from Motion Concepts is a simple and yet highly effective solution to meet the widest range of user needs.

As the landscape of seating changes, Matrix® stands out for its dedication to innovation, quality, and comfort.



Rehab Wheelchairs

Independent Users



Encore

Rehab Wheelchair

RECOMMENDED FOR:



SPECIFICATIONS

HCPCS CODE	E1161 Plus additional coded accessories
DEGREES OF TILT	Up to 33° (combined with rocking feature)
WEIGHT CAPACITY	Up to 250 lbs (113 kg)
SEAT WIDTHS	16", 18", 20", 22" (41 cm, 46 cm, 51 cm, 56 cm)
SEAT DEPTHS	16", 17", 18", 19", 20" (41 cm, 44 cm, 46 cm, 49 cm, 51 cm)
BACK CANES	16", 18", 21", 24" (41 cm, 46 cm, 54 cm, 61 cm) Angle adjustable to 5°, 10°, 15°, 20°
SEAT SURFACE HEIGHTS	Adjustable 14" - 19" (36 cm - 49 cm)
WHEELS - CASTERS REAR	5" (13 cm) Rear total lock 5" (13 cm) Rear aluminum non-locking
WHEELS - MAG WHEELS	20" or 22" front mount (51 cm, 56 cm)
WC19 CERTIFIED FOR VEHICLE TRANSPORT	Yes



Swing-Away Leg Supports



Elevating Leg Supports



Folding Back Canes
for Easy Storage

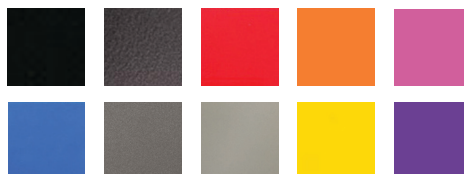


Adjustable & Removable
Arm Supports



Dynamic Rocking
Promotes User Engagement
and Strengthens Movement

FRAME COLOR OPTIONS



Click here to see
accessories, color options,
order forms, and more!





Rehab Wheelchairs

Independent Users

Comfort

Rehab Wheelchair

RECOMMENDED FOR:



SPECIFICATIONS

HCPCS CODE	E1161 Plus additional coded accessories
DEGREES OF TILT	Up to 45°
WEIGHT CAPACITY	Up to 250 lbs (113 kg)
SEAT WIDTHS	16", 18", 20", 22" (41 cm, 46 cm, 51 cm, 56 cm)
SEAT DEPTHS	Adjustable 16" - 20" (41 cm - 51 cm)
ADJUSTABLE BACK ANGLE	Angle adjustable to 5°, 10°, 15°, 20°
SEAT SURFACE HEIGHTS	Adjustable 14" - 19" (36 cm - 49 cm)
WHEELS - CASTERS REAR	5", 6", 8" Front fixed casters (13 cm, 16 cm, 21 cm)
WHEELS - MAG WHEELS	20", 22", or 24" rear mount (51 cm, 56 cm, 61 cm)
WC19 CERTIFIED FOR VEHICLE TRANSPORT	No



Swing-Away Leg Supports



Elevating Leg Supports



Infinitely-Adjustable Tilt



Removable Arm Supports



Adjustable Seat-to-Back Angle

FRAME COLOR OPTIONS



Click here to see accessories, color options, order forms, and more!



Rehab Wheelchairs
Independent Users



Latitude

Rehab Wheelchair

RECOMMENDED FOR:



SPECIFICATIONS

HCPCS CODE	E1161 Plus additional coded accessories
DEGREES OF TILT	Up to 33° (combined with rocking feature)
WEIGHT CAPACITY	Up to 250 lbs (113 kg)
SEAT WIDTHS	16", 18", 20", 22" (41 cm, 46 cm, 51 cm, 56 cm)
SEAT DEPTHS	15.5", 17", 18.5", 20" (39 cm, 44 cm, 47 cm, 51 cm)
BACK HEIGHT	32", 33.5", 35" (81 cm, 85 cm, 89 cm)
SEAT SURFACE HEIGHTS	Adjustable 14" - 19" (36 cm - 49 cm)
WHEELS - MAG	20", 22" Front or Rear Mount (51 cm, 56 cm)
WHEELS - CASTER	5" (13 cm) Rear total lock 5" (13 cm) Rear aluminum non-locking
WC19 CERTIFIED FOR VEHICLE TRANSPORT	No



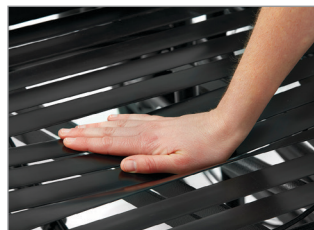
Dynamic Rocking Feature



Front-Pivot Seat Tilt

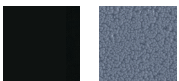


Posterior Tilt
Improves posture and redistributes pressure



Comfort Tension Seating®
improves postural support and sitting tolerance

FRAME COLOR OPTIONS



Click here to see accessories, color options, order forms, and more!



Rehab Wheelchairs Caregiver Dependent

Synthesis

Rehab Wheelchair

RECOMMENDED FOR:



SPECIFICATIONS

HCPCS CODE	E1161 Plus additional coded accessories
DEGREES OF TILT	Up to 40°
DEGREES OF RECLE	Up to 90°
WEIGHT CAPACITY	Up to 350 lbs. (159 kg)
SEAT WIDTHS	16", 18", 20", 22", 24", 26" (41 cm, 46 cm, 51 cm, 56 cm, 61 cm, 66 cm)
SEAT DEPTHS	17", 18.5", 20", 22" (44 cm, 47 cm, 51 cm, 56 cm)
SEAT SURFACE HEIGHTS	19.5", 20.5", 22", 23.5" (50 cm, 53 cm, 56 cm, 60 cm)
WHEELS - MAG	14", 20" (36 cm, 51 cm) Rear mount mag wheels 14" (36 cm) Mid mount mag wheels
WHEELS - CASTER	5" (13 cm) Front total lock or non-locking 6" (15 cm) Rear multi-directional locking
WC19 CERTIFIED FOR VEHICLE TRANSPORT	Yes



Tilt Functionality
Provides additional pressure offloading



Adjustable Upper Lateral Supports
Fit a variety of users

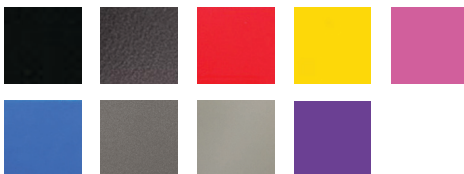


Front-Pivot Seat Tilt
Maintains a forward line of sight



Comfort Tension Seating®
Improves postural support and sitting tolerance

FRAME COLOR OPTIONS



Click here to see accessories, color options, order forms, and more!





Rehab Wheelchairs Caregiver Dependent

Elite

Rehab Wheelchair

RECOMMENDED FOR:



SPECIFICATIONS

HCPCS CODE	E1161 Plus additional coded accessories
DEGREES OF TILT	Up to 40°
DEGREES OF RECLINE	Up to 15°
WEIGHT CAPACITY	Up to 350 lbs (159 kg)
SEAT WIDTHS	16", 18", 20", 22", 24", 26", 28" (41 cm, 46 cm, 51 cm, 56 cm, 61 cm, 66 cm, 72 cm)
SEAT DEPTHS	17", 18.5", 20", 22" (44 cm, 47 cm, 51 cm, 56 cm)
BACK HEIGHT	32", 33.5", 35" (82 cm, 85 cm, 89 cm)
WHEELS - CASTERS REAR	5" (13 cm) Rear total lock 5" (13 cm) Rear aluminum non-locking
WHEELS - MAG WHEELS	14", 20", 22" Rear mount (36 cm, 51 cm, 56 cm)
WC19 CERTIFIED FOR VEHICLE TRANSPORT	Yes



Rear-mount mag wheels



Adjustable tilt and recline



Posterior tilt
Improves digestion,
oxygenation & organ function



Comfort Tension Seating®
improves postural support
and sitting tolerance

**Click here to see
accessories, color options,
order forms, and more!**



FRAME COLOR OPTIONS



Shower Commode Wheelchairs

Caregiver Dependent



Revive

Shower Commode Wheelchair

RECOMMENDED FOR:



SPECIFICATIONS

DEGREES OF TILT	Up to 12° (of posterior tilt) Up to 10° (of anterior tilt)
DEGREES OF RECLINE	Up to 67°
WEIGHT CAPACITY	Up to 400 lbs (181 kg)
SEAT WIDTHS	18", 22" (46 cm, 56 cm)
SEAT DEPTHS	18" (46 cm)
SEAT SURFACE HEIGHT	24.5" (63 cm)
BACK HEIGHT	26" (66 cm)
LIFETIME WARRANTY FRAME	16-Gauge Stainless Steel Frame 10 YEARS



Dynamic Tilting and Reclining



Removable Arm Supports for Easy Transfers



Anterior and Posterior Tilt



Rust-Resistant Frame and Components



Need a bariatric option?

The *Revive Bariatric Shower Commode* accommodates users up to 800 lbs.!

[Click here to see accessories, color options, order forms, and more!](#)



[Click to learn more!](#)



Shower Commode Wheelchairs

Independent Users



Sentinel

Shower Commode Wheelchair

RECOMMENDED FOR:



SPECIFICATIONS

BACK ANGLE	Angle adjustable to 5°, 10°, 15°
WEIGHT CAPACITY	Up to 300 lbs (136 kg)
SEAT WIDTHS	18", 20", 22" (46 cm, 51 cm, 56 cm)
SEAT DEPTHS	16", 17", 18", 19" (41 cm, 44 cm, 46 cm, 49 cm)
BACK HEIGHT	16", 18", 20" (41 cm, 46 cm, 51 cm)
SEAT SURFACE HEIGHTS	Adjustable 19.5" & 23.5" (50 cm, 60 cm)
WHEELS - MAG	24" Rear Mount (61 cm)
WHEELS - CASTER	5" (13 cm) Front total lock 5" (13 cm) Rear directional lock 5" (13 cm) Rear total lock
LIFETIME WARRANTY FRAME	16-Gauge Stainless Steel Frame 10 YEARS



All wheels can convert to casters



2-in-1 solid seat and commode



Configurable with either anti-rust, PVC mag wheels or cost-effective casters



Fold-up arm supports and swing-away leg supports

Click here to see accessories, color options, order forms, and more!





Libra Cushion



RECOMMENDED FOR:

Those at highest risk, with a history of or existing skin breakdown.

Cover - Moisture resistant Startex cover with zippered side pocket, lifting strap, slip resistant base and hook and loop fasteners for attachment to chair.

Liner - Moisture proof urethane slipcover

Fluid Sac - Non-temperature sensitive, no kneading or maintenance required. Three chamber design keeps fluid where it is required. Provides envelopment and shear protection to bony prominences.

Foam - High resiliency (HR) molded foam made with UltraFresh antimicrobial for odor protection. Contoured pelvic well maintains level pelvis and helps prevent sliding. Waterfall front edge facilitates safe transfers. Molded in loop fabric for easy and secure attachment of Fit Kit accessories if required.

SPECIFICATIONS

	STANDARD	HEAVY DUTY
WEIGHT CAPACITY	300 lbs (137 kg)	600 lbs (273 kg)
WIDTHS	16", 18", 20" (41 cm, 46 cm, 51 cm)	22", 24" (56 cm, 61 cm)
DEPTHS	16", 18", 20" (41 cm, 46 cm, 51 cm)	18", 20" (20 cm, 56 cm)
HCPCS	E2624	E2625



Multi Cushion



RECOMMENDED FOR:

Those at a moderate-to-high risk of skin breakdown.

Cover - Reversible Startex™ outer cover - can be used fabric or wipeable side out, moisture resistant and breathable, hook and loop fasteners for attachment to wheelchair.

Liner - Zippered, wipeable Startex™ inner cover for extra moisture protection. Easy access for cushion modifications

Top layer - BreZZy Gel foam with softer more comfortable feel and a mild cooling effect

Middle Layer - Co-molded viscofoam for optimal immersion and skin protection

Bottom Layer - HR (high resiliency) foam with multiple molded in positioning features. Maximum durability designed to prevent bottoming out.

SPECIFICATIONS

	STANDARD	HEAVY DUTY
WEIGHT CAPACITY	300 lbs (137 kg)	600 lbs (273 kg)
WIDTHS	16", 18", 20" (41 cm, 46 cm, 51 cm)	22", 24" (56 cm, 61 cm)
DEPTHS	16", 18", 20" (41 cm, 46 cm, 51 cm)	18", 20" (20 cm, 56 cm)
HCPCS	E2624	E2625



Vi Cushion



RECOMMENDED FOR:

Those at highest risk, with a history of or existing skin breakdown.

Cover – Moisture resistant Meshtex™ cover includes lifting strap, slip resistant base, hook and loop fasteners for attachment to chair.

Liner – Wipeable, moisture resistant Startex.

Top layer – Molded high resiliency (HR) foam made with UltraFresh antimicrobial for odor protection. Contoured for midline leg position and waterfall undercut to facilitate safe transfers.

Ischial insert – Supersoft viscoelastic foam insert for envelopment and protection of bony prominences.

Bottom Layer – Firm HR foam base provides stability and protection against bottoming out.

SPECIFICATIONS

	STANDARD	HEAVY DUTY
WEIGHT CAPACITY	300 lbs (137 kg)	600 lbs (273 kg)
WIDTHS	16", 18", 20" (41 cm, 46 cm, 51 cm)	22" (56 cm)
DEPTHS	16", 18", 20" (41 cm, 46 cm, 51 cm)	18", 20" (46 cm, 51 cm)
HCPCS	E2607	E2608



PSP Cushion



RECOMMENDED FOR:

Those at moderate-to-high risk of skin breakdown.

Cover – Reversible, moisture resistant Startex cover can be used fabric or wipeable side out. Hook and loop fasteners for attachment to chair.

Liner – Wipeable, moisture resistant Startex.

Polymer Insert – Molded-in polymer gel provides extra skin protection and shear reduction

Foam – HR (high resiliency) molded foam made with UltraFresh antimicrobial for odor protection. Waffled ischial relief area immerses pelvis and helps prevent sliding. Waterfall front edge to facilitate safe transfers.

SPECIFICATIONS

	STANDARD
WEIGHT CAPACITY	300 lbs (137 kg)
WIDTHS	16", 18", 20" (41 cm, 46 cm, 51 cm)
DEPTHS	16", 18", 20" (41 cm, 46 cm, 51 cm)
HCPCS	E2607



PS Cushion



RECOMMENDED FOR:

Those at low-to-moderate risk of skin breakdown.

Cover – Moisture resistant Startex cover with zippered side pocket, lifting strap, slip resistant base and hook and loop fasteners for attachment to chair.

Liner – Moisture proof urethane slipcover

Foam – HR (high resiliency) molded foam made with UltraFresh antimicrobial for odor protection. Contoured pelvic well maintains level pelvis and helps prevent sliding. Waterfall front edge facilitates safe transfers. Molded in loop fabric for easy and secure attachment of Fit Kit accessories if required.

Ischial relief area – Waffled ischial relief area immerses pelvis and helps prevent sliding.

SPECIFICATIONS

	STANDARD	HEAVY DUTY
WEIGHT CAPACITY	300 lbs (137 kg)	600 lbs (273 kg)
WIDTHS	16", 18", 20" (41 cm, 46 cm, 51 cm)	22", 24", 26" (56 cm, 61 cm, 66 cm)
DEPTHS	16", 18", 20" (41 cm, 46 cm, 51 cm)	18", 20", 22" (46 cm, 51 cm, 56 cm)
HCPCS	E2605	E2606



Back Supports

*Easy Set Hardware
Included on all backs*



Rotation

Back may be oriented to accommodate pelvic/trunk rotation



Angle

20° posterior/anterior range of back angle adjustment in front of back canes



Depth

Adjusts 2" behind back canes



Depth

Adjusts 2" in front of back canes



E2™

Back Supports



RECOMMENDED FOR:

All wheelchair users and suppliers looking for the best in back comfort, adjustability and support.

Shell – Designed for superior support and functionality with accessory openings and notched sacral cutout.

Foam – Contoured ripple foam with airflow channels creates extra immersion, temperature control, and shear reduction.

Cover – Meshtex™ outer cover is moisture resistant and breathable providing airflow, comfort, and protection.

Hardware – Easyset height and width increased adjustability makes it effortless to fit and adjust wheelchair sizes now including more incremental widths.

SPECIFICATIONS

	STANDARD
WEIGHT CAPACITY	300 lbs (137 kg)
WIDTHS	16", 17", 18", 19", 20" (41 cm, 43 cm, 46 cm, 48 cm, 51 cm)
HEIGHTS	16", 18", 20" (41 cm, 46 cm, 51 cm)
COUNTOUR DEPTH	3", 6" (8 cm, 15 cm)
HCPCS	E2615 / E2620



Elite (TR/Deep)

Back Supports



RECOMMENDED FOR:

Active users who want shoulder or hip clearance, or the ability to use add-on lateral supports Compatible with Encore Rehab and Comfort Rehab.

Shell - Contoured aluminum with cutouts for lifting and breathability. Available in standard (3", 8 cm) OR deep (6", 16 cm) contours.

Foam - High Resiliency (HR) foam enclosed in cover

Cover - Meshtex™ moisture resistant cover with foam overlaps the shell to provide comfort and protection.

Hardware - Easy adjustment of height/depth/angle and rotation for optimal positioning. Quick release for portability.

SPECIFICATIONS

	STANDARD	HEAVY DUTY
WEIGHT CAPACITY	300 lbs (137 kg)	500 lbs (227 kg)
WIDTHS	16", 18", 20" (41 cm, 46 cm, 51 cm)	22", 24", 26" (56 cm, 61 cm, 66 cm)
HEIGHTS	16", 18", 20" (41 cm, 46 cm, 51 cm)	16", 18", 20" (40 cm, 20 cm, 56 cm)
CONTOUR DEPTH	3", 6" (8 cm, 15 cm)	3", 6" (8 cm, 15 cm)
HCPCS	HCPCS E2620 - 3" (8 cm)	E2621 - 6" (15 cm)



PB/PD Deep

Back Supports



RECOMMENDED FOR:

Less active users who want exceptional comfort and a gently contoured shape

Shell - Lightweight ABS shell available in standard (5", 13 cm) or deep (7", 18 cm) contour depths

Foam - Molded High Resiliency (HR) foam made with UltraFresh antimicrobial for odor protection.

Cover - Attractive, moisture resistant Meshtex™ upholstered cover.

Hardware - Easy adjustment of height/depth/

SPECIFICATIONS

	STANDARD
WEIGHT CAPACITY	300 lbs (137 kg)
WIDTHS	16", 18", 20" (41 cm, 46 cm, 51 cm)
HEIGHTS	16", 20" (41 cm, 51 cm)
CONTOUR DEPTH	5", 7" (13 cm, 18 cm)
HCPCS	E2615



Loxx

Head Support Hardware



The Loxx head support hardware features a tool-less adjustment lever, which makes it simple to position the head support pad in all directions. Dual pivot balls and a slide bar allow infinite choices for orientation choices, and a curved vertical post allows for lateral or forward-mounting positions.

HCPCS E0128 / E0955

Elan

Head Support Hardware

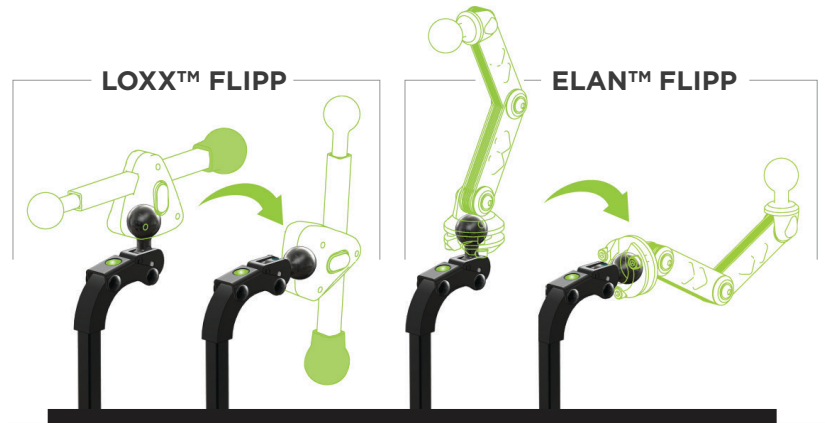


The Elan head support hardware features six (6) adjustment points with infinite positioning opportunities. The Elan can be installed with a single tool. Optional tool-less adjustment levers provide easy position changes as needed. Multi-disk locking provides superior holding strength.

HCPCS E0128 / E0955

Flipp Hardware

Upgrade to the Flipp Hardware, and with the push of a button, you can flip back the head support pad. Compatible with both the Loxx and the Elan head support hardware.



Head Support Pad Options

Pad Options



Standard Head Support Pad

HCPCS E0955

Made with durable foam, this head support pad is compact and versatile.



4-Point Head Support Pad

HCPCS E0955

The aluminum plates on this head support can be formed to the desired shape.

Optional positioning headband available.



Hug Head Support Pad

HCPCS E0955

Extra-immersive cushioning provides increased comfort and support.

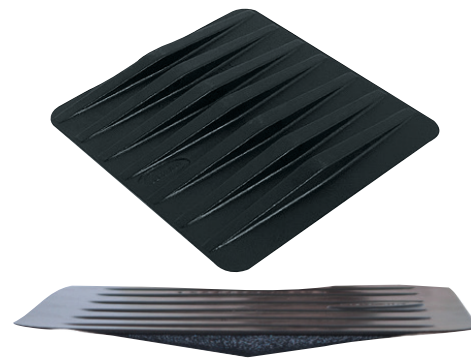
matrix
SEATING SERIES

Seating Accessories



Pelvic Obliquity Kit

Designed to accommodate up to 1" obliquities.



Cushion Rigidizer

Level support that eliminates hammock effect of sling seat upholstery. Securely fitted to bottom of foam cushion inside the cushion cover.

HCPCS E0992



Libra Cushion Options

- Anterior Seat Wedge
- Hemi Wedge
- Libra Fluid Supplement
- Libra Abductor
- Tapered Wedges

matrix
SEATING SERIES

Back Accessories



Fixed Laterals

Height adjustable, installed inside back shell.

HCPCS E0956



Swing-Away Laterals

Height adjustable, installed inside back shell.

HCPCS E0128



Privacy Flap

Fits widths **S**=16", **M**=18", **L**=20", **XL**=22", **XXL**=24"

Configure Your Rehab Chair

Step 1: Select Chair Frame

BRODA

MORE INDEPENDENT

LESS INDEPENDENT



Encore Rehab

250 lbs. weight capacity
Up to 33° Tilt
Dynamic Rocking
HCPCS E1161



Latitude Rehab

250 lbs. weight capacity
Up to 33° Tilt
Dynamic Rocking
HCPCS E1161



Comfort Rehab

250 lbs. weight capacity
Up to 45° Tilt
Highly Adjustable
HCPCS E1161



Synthesis Rehab

350 lbs. weight capacity
Up to 40° Tilt
Up to 90° Recline
HCPCS E1161



Elite Rehab

350 lbs. weight capacity
Up to 40° Tilt
Up to 15° Recline
HCPCS E1161



= WC19 Certified for vehicle transit.

All Matrix options ship pre-installed on your Broda wheelchair.

Step 2: Select Chair Seating

matrix
SEATING SERIES

MORE PRESSURE REDUCTION

LESS PRESSURE REDUCTION



Libra Cushion

HCPCS E2624 / E2625



Multi Cushion

E2607 / E2608



Vi Cushion

E2607 / E2608



PSP Cushion

E2607



PS Cushion

E2605 / E2606

Step 3: Select Back Support

Encore Rehab or Comfort Rehab



MORE SUPPORTIVE

LESS SUPPORTIVE



E2™ & E2 Deep
HCPCS E2620 / E2621



Elite (TR/Deep)
HCPCS E2620 / E2621



PB & PD Deep
HCPCS E2615

Synthesis Rehab, Elite Rehab, or Latitude Rehab



Comfort Tension Seating® is made up of individual straps that suspend the weight of the wheelchair user across multiple points. This system supplies therapeutic pressure relief, enhances postural support, reduces heat buildup, and maintains skin integrity.

[Click here to learn more about Comfort Tension Seating.](#)

Encore Rehab or Comfort Rehab

Step 4: Select Head Support



MORE SUPPORTIVE

LESS SUPPORTIVE

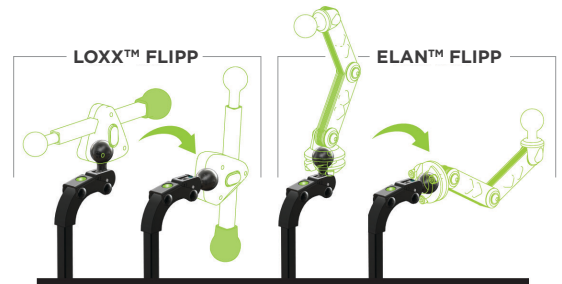


Loxx Head Support
HCPCS E0955 / E1028



Elan Head Support
HCPCS E0955 / E1028

Flipp Hardware

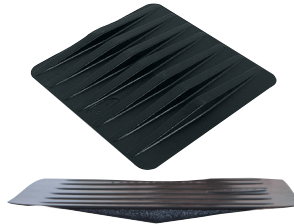


HCPCS codes supplied are for reference only and do not ensure coverage or payment. The HCPCS provided are based on our interpretation of the code definitions. HCPCS codes are not intended to be, nor should be considered billing or legal advice. Providers are responsible for determining the appropriate billing codes when submitting claims to the Medicare Program and should consult an attorney or other advisor to discuss specific situations in further detail.

Step 5: Select Additional Accessories: Seating



Pelvic Obliquity Kit



Cushion Rigidizer
HCPCS E0992



Libra Cushion Options

Step 6: Select Additional Accessories: Back



Fixed Laterals
HCPCS E0956



Swing-Away Laterals
HCPCS E0128



Privacy Flap
HCPCS E0128



BRODA[®]

matrix[®]
SEATING SERIES

Broda USA

15455 Conway Rd, Suite 200
Chesterfield, MO 63017, USA

Broda Canada

560 Bingemans Centre Dr
Kitchener, ON N2B 3X9, Canada

brodaseating.com

1-844-552-7632