

BRODA[®]

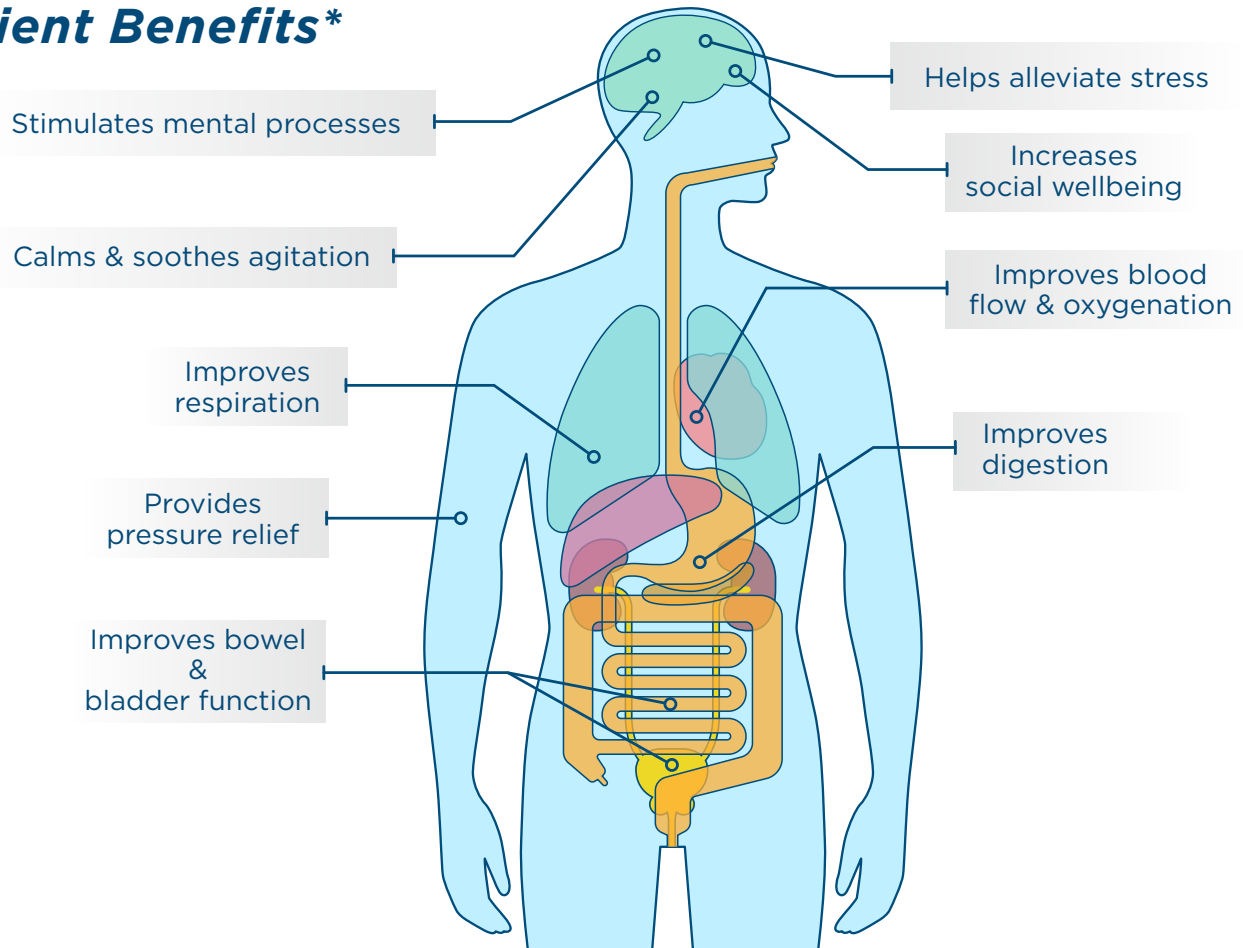
Configuration Guide

Customizable Options that Meet Your Needs

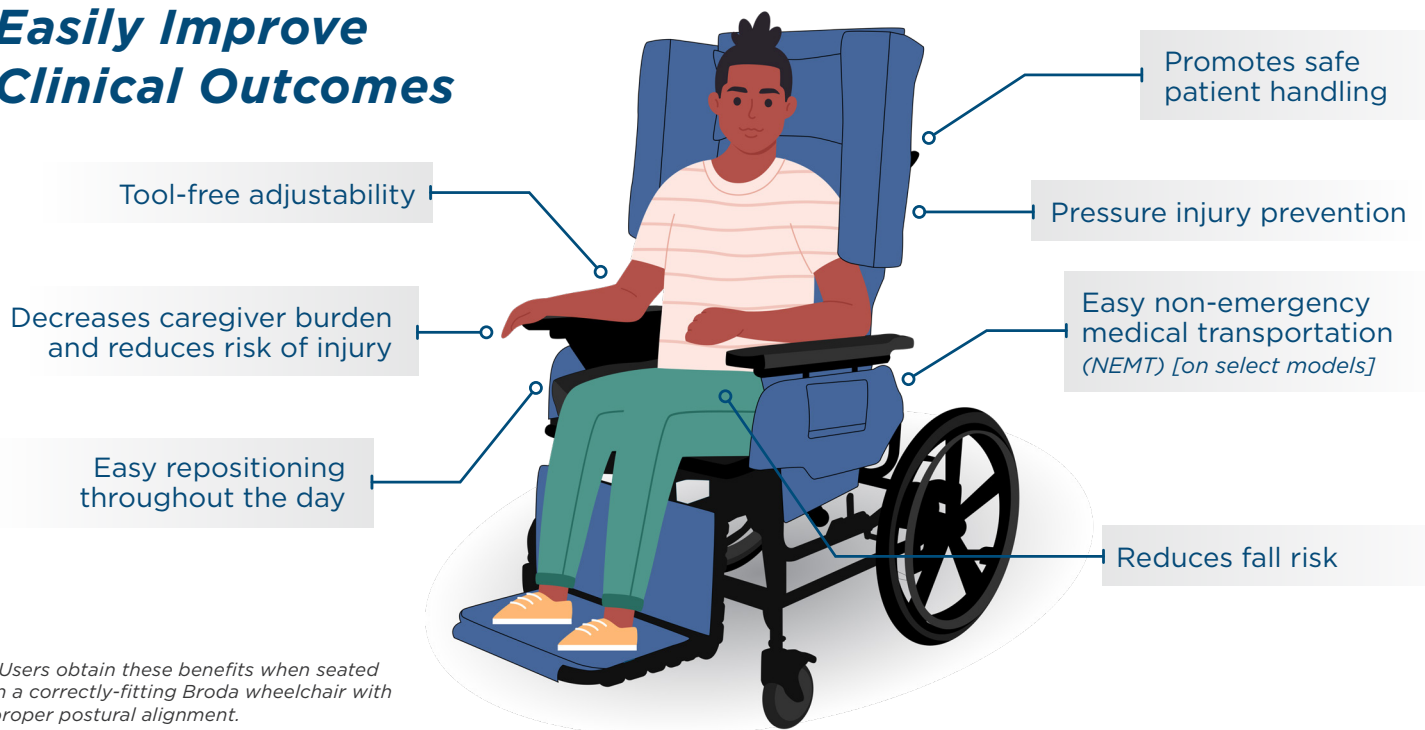


Why choose Broda?

Patient Benefits*



Easily Improve Clinical Outcomes



**Users obtain these benefits when seated in a correctly-fitting Broda wheelchair with proper postural alignment.*

Configure Your Wheelchair

	POSITIONING	PEDAL	REHAB	HYGIENE	GLIDER
STEP 1: <i>Select Your Wheelchair Type</i>	Tilt and recline functionality for the highest level of comfort and care. <i>Caregiver-Propelled</i>	Safe and independent mobility for any care setting. <i>Self-Propelled</i>	Durable and versatile wheelchairs for rehab and therapy. <i>E1161 Coded</i>	Shower Commode wheelchairs for a comfortable bathing experience	Smooth gliding motion in a stationary chair.
	Continue to SECTION A	Continue to SECTION B	Continue to SECTION C	Continue to SECTION D	Continue to SECTION E

Features, Functionality, & Customization Level

SECTION A:

Positioning Wheelchairs

(Caregiver-Propelled)

Select a positioning wheelchair and optional packages.

BEST

BASIC



Synthesis Positioning Wheelchair	Elite Positioning Wheelchair Elite Tilt Wheelchair	Midline Positioning Wheelchair	Centric Positioning Wheelchair	BARIATRIC	Vanguard Bariatric Wheelchair
350 lbs. weight capacity Up to 40° Tilt Up to 90° Recline	350 lbs. weight capacity Up to 40° Tilt Up to 90° Recline	350 lbs. weight capacity Up to 38° Tilt Up to 90° Recline	250 lbs. weight capacity Up to 25° Tilt Up to 45° Recline		600 lbs. weight capacity Up to 30° Posterior Tilt Up to 10° Anterior Tilt Up to 45° Recline
Optional Add-ons:	<ul style="list-style-type: none"> WC19 Transport Package Additional Positioning Padding (APP) Huntington's Special Padding (HSP) 		<ul style="list-style-type: none"> Acute Care Configuration (ACC) Slim Posture Padding (SPP) 		

Features, Functionality, & Customization Level

SECTION B:

Pedal Wheelchairs

(Self-Propelled)

Select a pedal wheelchair and optional packages.

BEST


BASIC



Encore Pedal Wheelchair with optional Dynamic Rocking feature	Latitude Pedal Wheelchair with Dynamic Rocking Feature	Sashay Pedal Wheelchair
250 lbs. weight capacity (rocking) 350 lbs. weight capacity (non-rocking) 500 lbs. weight capacity (Heavy Duty Package) Up to 33° Tilt	250 lbs. weight capacity Up to 33° Tilt	350 lbs. weight capacity Up to 18° Tilt
Optional Add-ons:	<ul style="list-style-type: none"> WC19 Transport Package Slim Posture Padding (SPP) Additional Positioning Padding (APP) Heavy Duty Package for 500 lb. weight capacity (Encore Pedal) 	

SECTION C:
*Rehab
Wheelchairs*

Select a rehab wheelchair and optional WC19 package.

 = WC19 Certified for vehicle transit.

MORE INDEPENDENT

LESS INDEPENDENT



Encore Rehab

Latitude Rehab

Comfort Rehab

Synthesis Rehab

Elite Rehab

250 lbs. weight capacity
Up to 33° Tilt
Dynamic Rocking
HCPCS E1161

250 lbs. weight capacity
Up to 33° Tilt
Dynamic Rocking
HCPCS E1161

250 lbs. weight capacity
Up to 45° Tilt
Highly Adjustable
HCPCS E1161

350 lbs. weight capacity
Up to 40° Tilt
Up to 90° Recline
HCPCS E1161

350 lbs. weight capacity
Up to 40° Tilt
Up to 15° Recline
HCPCS E1161

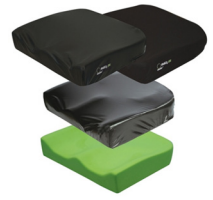
All Matrx options ship pre-installed on your Broda wheelchair.

STEP C1:
*Select
Chair Seating*

matrx
SEATING SERIES

MORE PRESSURE REDUCTION

LESS PRESSURE REDUCTION



Libra Cushion

Multi Cushion

Vi Cushion

PSP Cushion

PS Cushion

HCPCS E2624 / E2625

E2607 / E2608

E2607 / E2608

E2607

E2605 / E2606

Encore Rehab or Comfort Rehab

Latitude Rehab or Elite Rehab

STEP C2:
*Select
Back Support*

matrx
SEATING SERIES

MORE SUPPORTIVE

LESS SUPPORTIVE



E2 & E2 Deep Back

Elite (TR/Deep)

PB & PB Deep

HCPCS E2620 / E2621

HCPCS E2620 / E2621

HCPCS E2615

BRODA



- Comfort Tension Seating®
- Additional Positioning Padding (APP)
- Slim Posture Padding (SPP)

HCPCS E2601 / E2611

STEP C3:
*Select
Head Support*

matrx
SEATING SERIES

Encore Rehab or Comfort Rehab

MORE SUPPORTIVE

LESS SUPPORTIVE

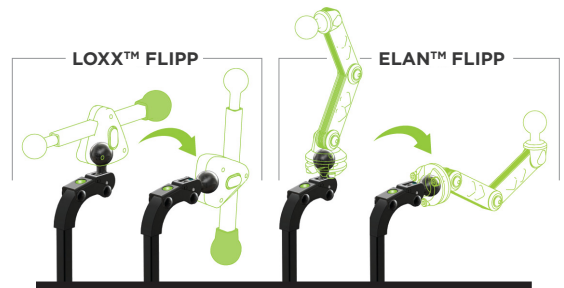


Loxx head support

Elan head support

HCPCS E0955 / E1028

HCPCS E0955 / E1028



HCPCS codes supplied are for reference only and do not ensure coverage or payment. The HCPCS provided are based on our interpretation of the code definitions. HCPCS codes are not intended to be, nor should be considered billing or legal advice. Providers are responsible for determining the appropriate billing codes when submitting claims to the Medicare Program and should consult an attorney or other advisor to discuss specific situations in further detail.

SECTION D:
*Hygiene
Wheelchairs*

INDEPENDENT USER

DEPENDENT USER



<p>Sentinel Shower Commode</p>	<p>Revive Shower Commode</p>	<p style="writing-mode: vertical-rl; transform: rotate(180deg);">BARIATRIC</p>
<p>300 lbs. weight capacity No Tilt or Recline</p>	<p>400 lbs. weight capacity 12° of Posterior Tilt 10° Anterior Tilt 67° of Recline</p>	
<p>Revive Bariatric Shower Commode 800 lbs. weight capacity 14° of Posterior Tilt 8° Anterior Tilt 67° of Recline</p>		

SECTION E:
Gliders



ADULT

PEDIATRIC

<p>Tranquille Glider</p>	<p>Aspire Pediatric Glider</p>
<p>250 lbs. weight capacity</p>	<p>200 lbs. weight capacity</p>

ANATOMICAL ASSESSMENT

Contact Name: _____ Phone: _____ Date: _____
 Patient Name: _____ Height: _____ Weight: _____

Please measure the patient at their widest points while sitting in an upright position and add 1"-2" inches to obtain proper seat width. Please use a soft flexible measuring tape to avoid injuries such as skin tears. This chart is useful for patients weighing up to 300lbs. For patients weighing more than 300lbs, please see our Bariatric Anatomical Assessment.

- Shoulder Width - Measure the patient at the widest point of the shoulders.
- Seat Width - While sitting on a firm surface, measure the width of the hips/hips at the widest point.
- Width at knee - Measure across the widest point of the knees.
- Back Height - Measure from the seating surface to the top of the head.
- Back Length - Measure from the seating surface to the base of the neck.
- Seat Depth - Is measured from the posterior (back) of the buttocks to the posterior (back) of the knees.
- Seat Height - If the patient utilizes a cushion when in the chair, complete measurements with the cushion in place to obtain proper measurements. With the feet on the floor, measure 10" of "Knee" distance from the base to the underside of the knee and add 1"-2" inches to allow for clearance of the feet.
- Armrest Length - With the shoulder in a neutral position, measure from the olecranon edge of the elbow to the finger tip.

CLIENT MEASUREMENTS:
(Width Measurements inside of circles)

BRODA
COMFORT SEATING



Anatomical Assessment Form

BARIATRIC ANATOMICAL ASSESSMENT

Assessor's Name: _____ Phone: _____ Date: _____
 Patient's Name: _____ Height: _____ Weight: _____

Please measure the patient at their widest points while sitting in an upright position and add 1"-2" inches to obtain proper seat width. Please use a soft flexible measuring tape to avoid injuries such as skin tears. This chart is used for the assessment of bariatric patients. For non-bariatric patients please see our Standard Anatomical Assessment.

- Shoulder Width - Measure the patient at the widest point of the upper arms/shoulders.
- Torso Width - With the patient sitting in an upright position, measure across from lateral elbow to lateral elbow. This measurement will help ensure the proper width for the base of the chair.
- Seat Width - While sitting on a firm surface, measure the hip/hips at the widest point.
- Calf Width - Measure across the widest point from the kneecap.
- Back Height - Measure from the seating surface to the top of the head.
- Back Length - Measure from the seating surface to the base of the neck.
- Distal Arm - Is measured from the patient's back when seated upright to the extension of the gloves.
- Armrest Height - With the patient seated, place the shoulder in a neutral position and get parallel to the floor, measure from the seating surface to the forearm.
- Seat Depth - Is measured from the posterior (back) of the buttocks to the posterior (back) of the knees.
- Seat Height - If the patient utilizes a cushion when in the chair, complete measurements with the cushion in place to obtain proper measurements. Measure from the base of the feet to the most prominent portion of the posterior (back) of thigh and add 1"-2" inches to allow for clearance of the feet.
- Armrest Length - With the shoulder in a neutral position, measure from the olecranon edge (bony) at the elbow to the finger tip.

CLIENT MEASUREMENTS:
(Width Measurements inside of circles)

BRODA
COMFORT SEATING



Bariatric Anatomical Assessment Form



BRODA[®]

matrx[®]
SEATING SERIES

Broda USA
15455 Conway Rd, Suite 200
Chesterfield, MO 63017, USA

Broda Canada
560 Bingemans Centre Dr
Kitchener, ON N2B 3X9, Canada

brodaseating.com

1-844-552-7632

GSA Contract #
36F79721D0039

Assistive Devices Program

Ontario 
Ministry of Health
Ministry of Long-Term Care