

BRODA[®]

Product Guide

Quality Comfort for Any Care Setting



BRODA[®]

For over 40 years, Broda has been at the forefront of innovation in healthcare seating, driven by a mission to advocate for patient comfort and overall well-being. We understand the profound impact that comfort can have on health, which is why our range of top-quality, durable medical equipment is designed to improve the quality of life for individuals with the most challenging medical conditions.

Each product is crafted to deliver unparalleled comfort, safety, and mobility, making daily care easier for caregivers, healthcare facilities, and medical equipment dealers. Welcome to a world where patient comfort meets innovative design—welcome to Broda.



Our Vision:

Transforming Healthcare
Comfort Globally



Our Mission:

Broda is dedicated to improving lives with our caring approach by providing comfortable and personalized mobility solutions trusted by families, clinicians & NEMT providers.



= *E1161 Approved*



= *WC19 Certified*



= *Made in North America*

Table of Contents

Why choose Broda?	3
Testimonials	4
Seating & Positioning Essentials.....	5
WC19 Transport Package.....	6
Broda Benefits	7
Positioning Wheelchairs	9
Pedal Wheelchairs.....	15
Rehabilitation (E1161) Wheelchairs	19
Transport (NEMT) Wheelchair.....	25
Hygiene Shower Commodes.....	27
Behavioral Gliders	31
Padding Packages.....	34
Rehab Seating.....	35
Popular Accessories	37
Specifications.....	39
Frame & Upholstery Options	43
Configuration Guide.....	47
Resources	49

Product Categories

For over four decades, Broda has been bringing comfortable seating solutions to patients and caregivers in long-term and complex care settings. Our full line of positioning, pedal, rehab, shower & commode wheelchairs, and stationary gliders has contributed to clinical excellence worldwide.

POSITIONING



Tilt and recline features provide the optimum pressure redistribution and injury prevention.

[SYNTHESIS POSITIONING WHEELCHAIR](#)
[pg. 10](#)

REHABILITATION (E1161)



Durable, versatile wheelchairs enhance function in activities of daily living (ADLs).

[ENCORE REHAB WHEELCHAIR](#)
[pg. 20](#)

PEDAL



Broda wheelchairs maximize independent mobility while offering supportive comfort.

[ENCORE PEDAL WHEELCHAIR](#)
[pg. 16](#)

HYGIENE



Shower and commode chairs facilitate a dignified, multi-positional hygiene experience.

[REVIVE SHOWER COMMODE](#)
[pg. 28](#)

TRANSPORT (WC-19)



All the benefits of a standard Broda wheelchair, certified for non-emergency medical transportation (NEMT).

[TRAVERSA TRANSPORT WHEELCHAIR](#)
[pg. 26](#)

BEHAVIORAL

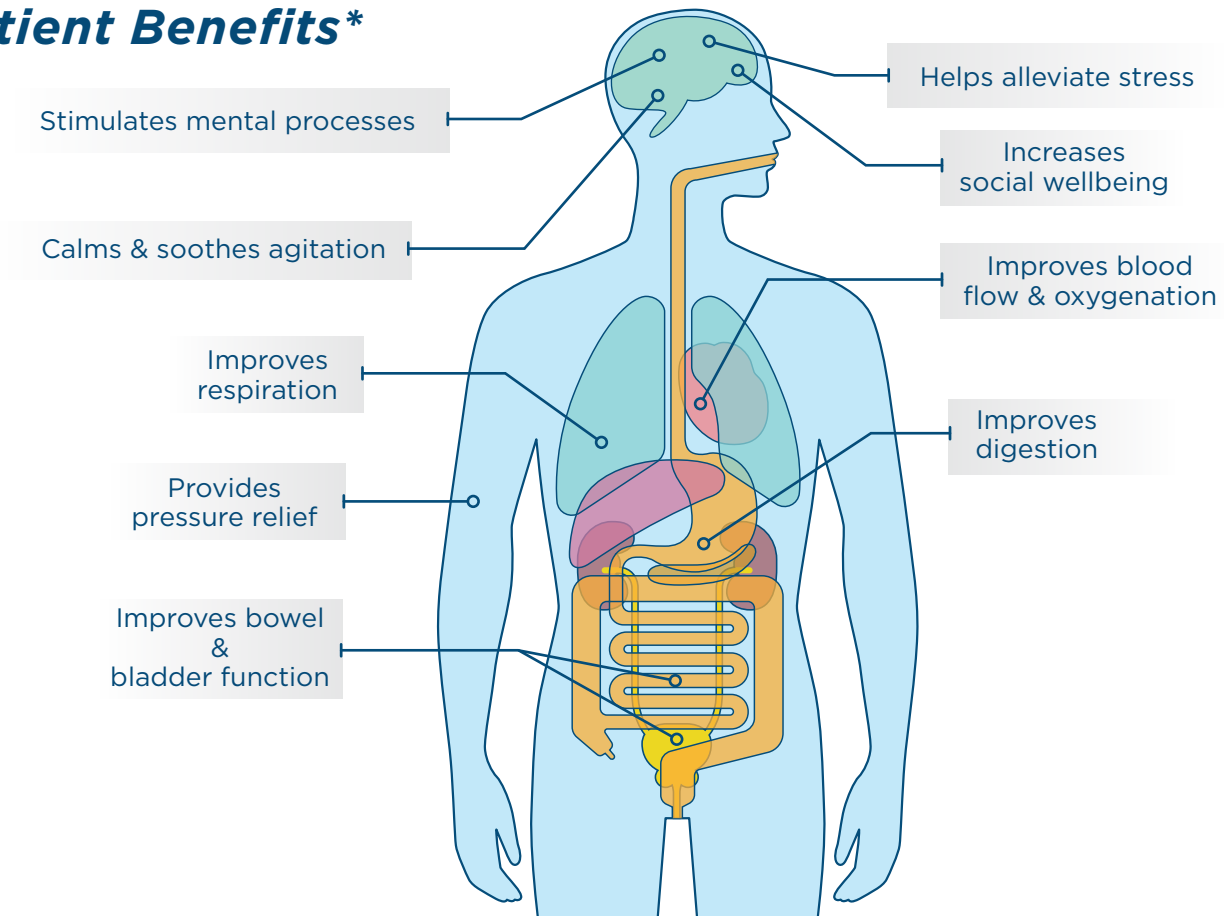


Stationary chairs with safe gliding motion promote calming comfort for adult and pediatric clients.

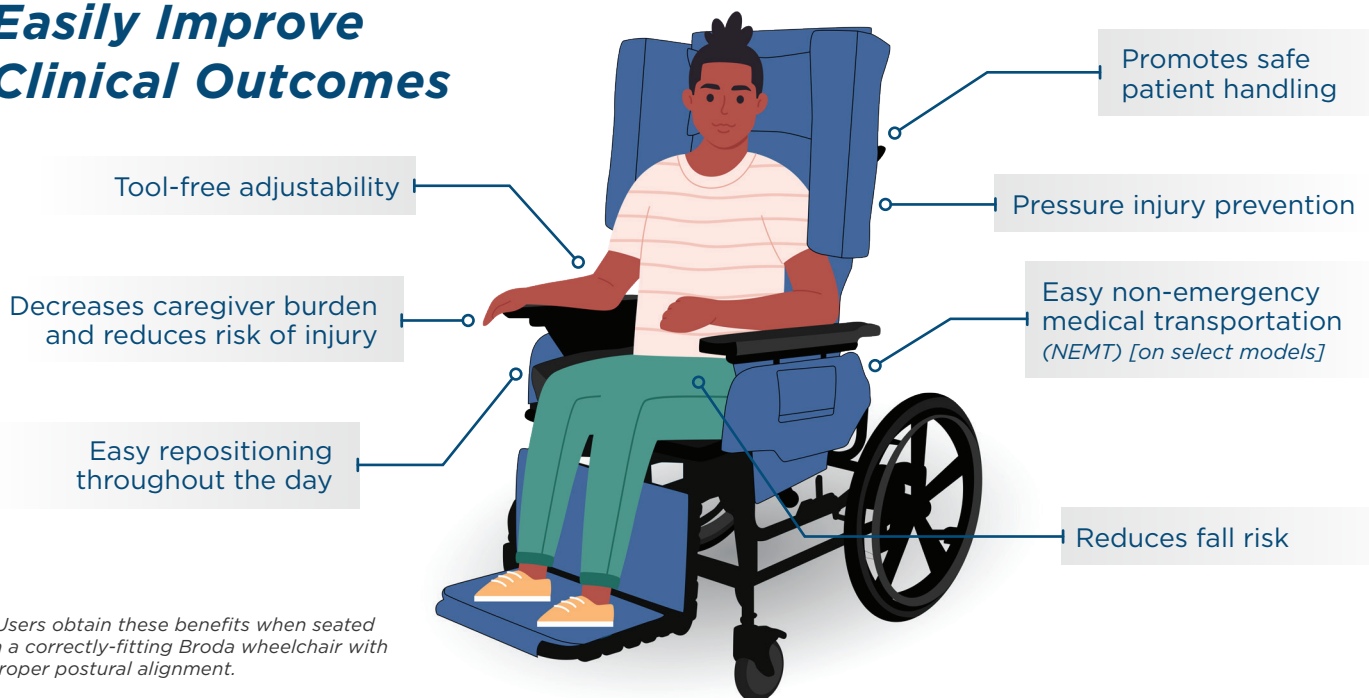
[TRANQUILLE GLIDER](#)
[pg. 32](#)

Why choose Broda?

Patient Benefits*



Easily Improve Clinical Outcomes



**Users obtain these benefits when seated in a correctly-fitting Broda wheelchair with proper postural alignment.*

Testimonials

Family Members

“At the age of 82, my father had advanced Parkinson’s and dementia. His power wheel chair was taken away for safety concerns. In a fortunate twist of fate, he qualified for the VA to fund a Broda wheelchair. This wheelchair has improved his quality of life and I can’t imagine him not being in it over the past few years. We are fortunate that the VA will fund Broda chairs for veterans like him who need them.”

—**Family Member**
Kansas, USA

“My son has had a Broda chair for the past 8 years. He was 23 years old when he acquired his [Traumatic Brain Injury] from a motorcycle accident. The Broda chair has allowed him to be up out of bed on a daily basis. If not for his Broda, he wouldn’t be able to get out of bed because he has no truck control and cannot sit in other chairs for any extended periods.”

—**Judy**
Michigan, USA

Clinicians

“Our staff really likes the Broda chairs. They are easy to use, adjust, roll, etc. They are excellent, durable chairs and we are very satisfied.”

—**Kim K.**
Georgia, USA

“My facility had been trying for months to accommodate our Huntington’s resident with comfortable seating...As soon as he was placed in the Broda Elite Positioning Wheelchair, he never made a sound of pain or cried out in anger, and he actually tried to communicate with those around him. We were so pleased this gentleman did not need as much supervision and care as he had in the other chairs he had tried. We were so amazed at how quickly his behavior improved with Broda.”

—**Physical Therapist**
New York, USA



“My brother who has ALS is completely paralyzed. We had a dream of taking him to his summer home in Vermont. The Synthesis [Positioning Wheelchair] went above and beyond to provide him with a comfortable wheelchair that allowed him to enjoy everything he wanted, including visiting with friends, hanging out at our boathouse, and even going on the boat itself! It was a nice change of pace over having to stay in bed all day.”

—**Amy T.**
California, USA



“Our facility had a gentleman with severe contractures in his legs and he had not been out of bed for a very long time...After discussing his needs, we arranged a trial of an Elite Positioning Wheelchair for this resident. For the first time in a very long time, the resident was able to be out of bed, comfortable, and social again. We want to thank Broda for solving an issue that we thought was unsolvable.”

—**Occupational Therapist**
South Carolina, USA

Seating & Positioning Essentials

Features and functionality for most Broda positioning, pedal, and rehab wheelchairs

Seat Tilt

Keeps the occupant's hips at a fixed angle

- Facilitates pressure redistribution
- Allows posterior positioning for comfort
- Angle-adjustable seat accommodates lifts and transfers



Back Recline

Opens angle of the occupant's hips

- Infinitely adjustable to the patient's preference.
- Decreases postural deviations, such as lateral lean and slumping
- Many models are capable of Trendelenburg Position

Adjustable & Removable Arm Supports

Provides support for the occupant's arms

- Improves postural stability with support of upper extremities
- Removable arm supports provide easy access for caregivers making frequent adjustments, transfers, or repositioning.



Adjustable & Removable Leg Supports

Created support for the occupant's legs and/or feet

- Improves comfort and circulation lower extremity support
- Provides support and positioning of the lower legs and feet
- Removable leg supports facilitate safe front standing transfers

Adjustable & Removable Upper Lateral Supports

Helps maintain the occupant's postural support

- Promotes a midline posture and minimizes postural deviations
- Easily removable for safe transfers
- Enhances users' comfort and safety





WC19 Transport Package

If your wheelchair needs to take you outside of the home or facility, the WC19 Transport package allows for safe patient transport in an accessible vehicle.

This package adds the convenience of keeping the individual in the same wheelchair for everyday care and transportation. This reduces the number of transfers and improves the overall comfort and safety for both the user and the caregiver. The WC19 Wheelchair standards are put forth by the American National Standards Institute (ANSI) and the Rehabilitation Engineering and Assistive Technology Society of North America (RESNA) and tested by the University of Michigan Transportation Research Institute (UMTRI).

What Makes a Wheelchair WC19 Certified?

To be WC19 compliant, a wheelchair must meet the following criteria:



1 Four easily accessible securement points on the wheelchair frame.



2 A wheelchair-anchored pelvic belt restraint.



3 WC19 labeling on the wheelchair frame and belts.



4 Successful completion of a 30-mph, 2-g frontal impact test without any components failing. An occupied crash test with a test dummy is a plus.



5 Securement geometry that accepts a securement strap end-fitting hook.



6 A clear path of travel that allows proper placement of vehicle-mounted occupant safety belts next to the skeletal parts of the passenger's body.



7 No sharp edges



Broda Benefits

At Broda, we promise to promote and preserve the wellbeing of the people who use our products. You can be sure your Broda chair or wheelchair will provide you with the following benefits.



Seating Comfort

We believe comfort is essential to a high quality of life and overall wellbeing.



Positioning

Our products offer postural alignment, pressure relief, and secure seating.



Mobility

Broda will help you reach the independence and social connection you deserve.



Patient Safety

Each of our products protects the user with built-in safety features.



Caregiving Safety

We are dedicated to making healthcare facilities safe for every caregiver.



Infection Control

Keeping you healthy is our priority. Our products are easy to clean and disinfect.



Durability

Our long-lasting products are guaranteed by our unbeatable 10-year frame warranty.



Personalization

We'll build a wheelchair to match your style and provide the perfect fit.



Easy Order

Our team of seating and positioning experts are here to guide you through the process.



The Broda Face

When someone sits in a Broda wheelchair for the first time, their face says it all. Expressions always shift from pain and discomfort to contentment and relief. We fondly refer to this expression as the “Broda Face.” These faces inspire our mission to transform healthcare comfort globally.



POSITIONING



View all positioning wheelchairs online



"The **Synthesis Positioning Wheelchair** has been a blessing for my father, his caregivers and my family. It **improves his quality of life** and I can't imagine him not being in it over the past few years."

- Kent P.
Family member



Shown with Royal Purple frame and rear 14" mag wheel option



Synthesis

Positioning Wheelchair

A full range of positioning features with a contemporary design



Tilt functionality provides additional pressure offloading



Front-pivot seat tilt maintains a forward line of sight, enhancing engagement.

SPECIFICATIONS



INFINITELY ADJUSTABLE TILT	Up to 40°
INFINITELY ADJUSTABLE RECLINE	Up to 90° (Trendelenburg Capable)
WEIGHT CAPACITY	350 lbs. (158 kg)
SEAT WIDTHS	16 in, 18 in, 20 in, 22 in, 24 in, 26 in (40 cm, 45 cm, 50 cm, 55 cm, 61 cm, 66 cm)
SEAT DEPTHS	17 in, 18.5 in, 20 in, 22 in (43cm, 46 cm, 50 cm, 56 cm)
LIFETIME WARRANTY FRAME	16-Gauge tubular steel frame 10 YEARS



Adjustable upper lateral supports fit a variety of users



Optional WC-19 Transportation Package enables safe patient travel*


View accessories, color options, order forms, and more!
Synthesis Positioning Wheelchair


*WC19 certified transport package available on seat widths 16"-24".



Shown with 14" mid-mount mag wheel



Elite

Positioning Wheelchair*

**Elite Positioning Wheelchair is only available in Canada and Australia*

Enhanced positioning & functionality



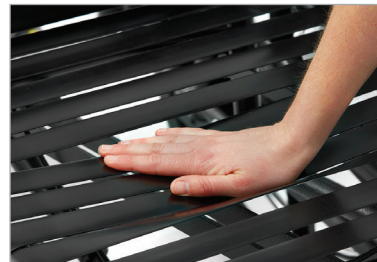
Tilt and optional recline functionality allow easy repositioning of users



Removable arm supports make transfers safer for caregivers and patients



Posterior Tilt effectively opens the diaphragm improving digestion, oxygenation, and organ function



Comfort Tension Seating® increases support and sitting tolerance

SPECIFICATIONS

INFINITELY ADJUSTABLE TILT	Up to 40°
INFINITELY ADJUSTABLE RECLINE	Up to 90°
WEIGHT CAPACITY	350 lbs. (158 kg)
SEAT WIDTHS	16 in, 18 in, 20 in, 22 in, 24 in, 26 in, 28 in (40 cm, 40 cm, 50 cm, 55 cm, 61 cm, 66 cm, 65 cm)
SEAT DEPTHS	15.5 in, 17 in, 18.5 in, 20 in, 22 in (37.5 cm, 43 cm, 46 cm, 50 cm, 56 cm)
LIFETIME WARRANTY FRAME	16-Gauge tubular steel frame 10 YEARS



View accessories, color options, order forms, and more!

Elite Positioning Wheelchair





Elite

Tilt Wheelchair

Simplified pressure-relieving technology



Tilt functionality makes it easy to reposition users for maximum pressure redistribution.



Removable arm supports make transfers safer for caregivers and patients.



Available with rear mag wheels, mid-mount mag wheels, or four casters.



Comfort Tension Seating® increases airflow and reduces heat and moisture buildup

SPECIFICATIONS

INFINITELY ADJUSTABLE TILT	Up to 40°
WEIGHT CAPACITY	350 lbs. (159 kg)
SEAT WIDTHS	16 in, 18 in, 20 in, 22 in, 24 in, 26 in, 28 in (40 cm, 40 cm, 50 cm, 55 cm, 61 cm, 66 cm, 65 cm)
SEAT DEPTHS	15.5 in, 17 in, 18.5 in, 20 in, 22 in (37.5 cm, 43 cm, 46 cm, 50 cm, 56 cm)
LIFETIME WARRANTY FRAME	16-Gauge tubular steel frame 10 YEARS



View accessories, color options, order forms, and more!

Elite Tilt Wheelchair





Midline

Positioning Wheelchair

Enhanced positioning with refined features



Full tilt and recline functionality provides superior positioning and Trendelenburg capability.



Adjustable seat surface height adapts the Midline to support users at multiple care levels



Tilt-in-space enhances pressure management and wound prevention.



Comfort Tension Seating® increases support as well as sitting tolerance

SPECIFICATIONS

INFINITELY ADJUSTABLE TILT	Up to 38°
DEGREES OF RECLINE	Up to 90° (Trendelenburg capable)
WEIGHT CAPACITY	Up to 350 lbs (159 kg)
SEAT WIDTHS	16 in, 18 in, 20 in, 22 in, 24 in, 26 in, 28 in (40 cm, 45 cm, 50 cm, 55 cm, 61 cm, 66 cm, 71 cm)
SEAT DEPTHS	15.5 in, 17 in, 18.5 in, 20 in (39 cm, 43 cm, 45 cm, 58 cm)
SEAT SURFACE HEIGHTS (ADJUSTABLE)	17 in, 18 in, 19 in, 20 in, 21 in, 22 in (43 cm, 45 cm, 48 cm, 58 cm, 53 cm, 55 cm)
LIFETIME WARRANTY FRAME	16-Gauge Tubular Steel Frame 10 YEARS



View accessories, color options, order forms, and more!

Midline Positioning Wheelchair





Vanguard

Bariatric Wheelchair

Bariatric positioning care redefined



Shown with the Acute Care Configuration (ACC) full vinyl wrap option



Anterior and posterior tilt aids in safe patient handling



Swing-Away, Removable Arm Supports facilitate side transfers

SPECIFICATIONS

INFINITELY ADJUSTABLE TILT	Up to 10° Anterior, Up to 30° Posterior
DEGREES OF RECLINE	Up to 45°
WEIGHT CAPACITY	Up to 600 lbs (272 kg)
SEAT WIDTHS	24 in, 26 in, 28 in, 30 in (61 cm, 66 cm, 71 cm, 76 cm)
SEAT DEPTHS	21 in, 23 in (53 cm, 58 cm)
SEAT SURFACE HEIGHTS	20 in, 21 in, 22 in, 23 in, 24 in (50 cm, 53 cm, 55 cm, 58 cm, 60 cm)
LIFETIME WARRANTY FRAME	16-Gauge Tubular Steel Frame 10 YEARS



Manual foot pump allows safe, no lift tilt positioning



Concave back for gluteal shelf improves user support & dignity



View accessories, color options, order forms, and more!

Vanguard Bariatric Wheelchair



PEDAL



View all pedal wheelchairs online



"Prior to the **Encore wheelchair**, we had tried numerous positioning devices for the resident, which were ineffective. She had a tendency to lean forward and to one side. Once using the Encore, the resident's posture immediately improved. She, herself, was very thankful because she was **"so comfortable"**. The staff couldn't believe the result. Besides this resident sitting in proper alignment, she could still self-propel with her feet."

- Linda P.
Restorative Coordinator

Encore

Pedal Wheelchair

Mobility with comfort, functionality & style



Upgrade to the Heavy Duty Package for a 500 lb. weight capacity.



Adjustable seat surface height goes as low as 12.5 in. (32 cm) for optimal heel strike



Front-pivot seat tilt maintains a proper position for self-propulsion



Optional Dynamic Rocking feature helps the user remain calm and content



Comfort Tension Seating® increases support as well as sitting tolerance

SPECIFICATIONS

INFINITELY ADJUSTABLE TILT	Up to 40°
WEIGHT CAPACITY	Up to 350 lbs. (114 kg)
	Dynamic Rocking Up to 250 lbs. (114 kg)
	Heavy Duty Package Up to 500 lbs. (227 kg)
SEAT WIDTHS	16 in, 18 in, 20 in, 22 in, 24 in, 26 in, 28 in (40 cm, 45 cm, 50 cm, 55 cm, 61 cm, 66 cm, 71 cm)
	16 in, 18 in, 20 in, 22 in (40 cm, 45 cm, 50 cm, 55 cm) with Dynamic Rocking
SEAT SURFACE HEIGHTS	Rocking Adjustable 14 in, 15 in, 16 in, 17 in, 18 in, 19 in (36 cm, 38 cm, 41 cm, 43 cm, 46 cm, 48 cm)
	Non-Rocking Adjustable 12.5 in, 13.5 in, 14.5 in, 15.5 in, 16.5 in, 17.5 in (32 cm, 34 cm, 37 cm, 39 cm, 42 cm, 44 cm)
LIFETIME FRAME WARRANTY	16-Gauge Tubular Steel Frame 10 YEARS



View accessories, color options, order forms, and more!

Encore Pedal Wheelchair



For more information visit brodaseating.com



Sashay

Pedal Wheelchair

Simplified Mobility & Dynamic Movement



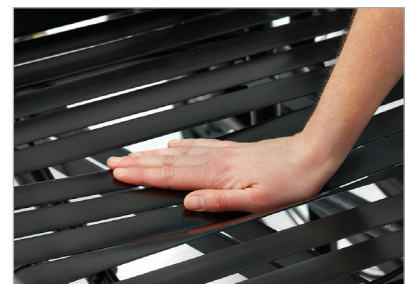
Front-pivot seat tilt maintains user comfort with smooth, effortless tilt



Adjustable arm-rests aid in user comfort and positioning



Adjustable seat surface height allows for proper foot propulsion



Comfort Tension Seating® improves postural support and sitting tolerance

SPECIFICATIONS

INFINITELY ADJUSTABLE TILT	Up to 40°
WEIGHT CAPACITY	Up to 350 lbs. (159 kg)
SEAT WIDTHS	16 in, 18 in, 20 in, 22 in, 24 in, 26 in, 28 in (40 cm, 46 cm, 51 cm, 56 cm, 61 cm, 66 cm, 72 cm)
SEAT DEPTHS	15.5 in, 17 in, 18.5 in, 20 in (40 cm, 44 cm, 47 cm, 51 cm)
LIFETIME FRAME WARRANTY	16-Gauge Tubular Steel Frame 10 YEARS



View accessories, color options, order forms, and more!

Sashay Pedal Wheelchair





Latitude

Pedal Wheelchair

Simplified Mobility & Dynamic Movement



Rocking motion helps calm agitation, creating a soothing effect



Posterior tilt aids in pressure redistribution



Front-pivot seat tilt enhances visual orientation and encourages self-mobility with proper foot-on-floor positioning

SPECIFICATIONS

INFINITELY ADJUSTABLE TILT	Up to 33°
WEIGHT CAPACITY	250 lbs. (113 kg)
SEAT WIDTHS	16 in, 18 in, 20 in, 22 in (41 cm, 46 cm, 51 cm, 56 cm)
SEAT DEPTHS	15.5 in, 17 in, 18.5 in, 20 in (40 cm, 44 cm, 47 cm, 51 cm)
SEAT SURFACE HEIGHTS	14 in, 15 in, 16 in, 17 in, 18 in, 19 in (35 cm, 38 cm, 40 cm, 43 cm, 45 cm, 48 cm)
LIFETIME WARRANTY FRAME	16-Gauge Tubular Steel Frame 10 YEARS



View accessories, color options, order forms, and more!

Latitude Pedal Wheelchair



Comfort Tension Seating® improves postural support and sitting tolerance

REHABILITATION (E1161)



View all rehab
wheelchairs online



“Broda’s wheelchairs make it **easier for caregivers** to provide optimal care with less stress on the client and the caregiver. For example, easier transfers, easier re-positioning, less maintenance, and easier mobility.”

- Carole P.
MS/OTR.



Shown with NEW
Passion Pink frame color



Encore

Rehab Wheelchair

Fully-customizable mobility



Back canes fold down for easy storage options



Dynamic rocking function soothes and stimulates the user



Front-pivot seat tilt maintains a proper position for self-propulsion



Open seating system allows for almost any seating configuration

SPECIFICATIONS

INFINITELY ADJUSTABLE TILT	Up to 33° (with Dynamic Rocking)
WEIGHT CAPACITY	250 lbs. (114 kg)
SEAT WIDTHS	16 in, 18 in, 20 in, 22 in (40 cm, 45 cm, 50 cm, 55 cm)
SEAT DEPTHS	ADJUSTABLE 16 in, 17 in, 18 in, 19 in, 20 in (40 cm, 43 cm, 45 cm, 48 cm, 50 cm)
SEAT SURFACE HEIGHTS	ADJUSTABLE 14 in (35 cm) - 19 in (48 cm)
LIFETIME FRAME WARRANTY	16-Gauge Tubular Steel Frame 10 YEARS



View accessories, color options,
order forms, and more!

Encore Rehab Wheelchair



For more information visit brodaseating.com



Shown with rear 14" mag wheels and Matrix PS Cushion



Synthesis

Rehab Wheelchair*

**Synthesis Rehab Wheelchair is only available in the United States*

Dynamic positioning throughout rehabilitation



Tilt and recline functionality provide pressure offloading.



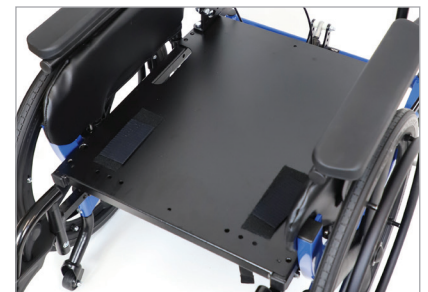
Front-pivot seat tilt maintains a forward line of sight, enhancing engagement.

SPECIFICATIONS

INFINITELY ADJUSTABLE TILT	Up to 40°
INFINITELY ADJUSTABLE RECLINE	Up to 90°
WEIGHT CAPACITY	350 lbs. (158 kg)
SEAT WIDTHS	16 in, 18 in, 20 in, 22 in, 24 in, 26 in (40 cm, 45 cm, 50 cm, 55 cm, 61 cm, 66 cm)
SEAT DEPTHS	17 in, 18.5 in, 20 in, 22 in (43cm, 46 cm, 50 cm, 56 cm)
SEAT SURFACE HEIGHTS	19.5 in, 20.5 in, 22 in, 23.5 in (48cm, 51 cm, 55 cm, 59 cm)
LIFETIME WARRANTY FRAME	16-Gauge tubular steel frame 10 YEARS



Adjustable upper lateral supports fit a variety of users.




Solid seat pan provides support for a variety of cushions.



View accessories, color options, order forms, and more!

Synthesis Rehab Wheelchair



**Synthesis Rehab Wheelchair is only available in the United States.*



Comfort

Rehab Wheelchair

Simplified durability for rehabilitation care

matrix
SEATING SERIES

Shown with optional head support, Matrix® Elite back support, Matrix® Vi seat cushion, and angle-adjustable lower leg supports



Infinitely-adjustable seat tilt maintains user comfort with smooth, effortless tilt



Posterior tilt optimizes pressure redistribution

SPECIFICATIONS

INFINITELY ADJUSTABLE TILT	Up to 45°
ANGLE ADJUSTABLE BACK CANES	5°, 10°, 15°, 20°
WEIGHT CAPACITY	250 lbs (114 kg)
SEAT WIDTHS	16 in, 18 in, 20 in, 22 in (40 cm, 45 cm, 50 cm, 55 cm)
SEAT DEPTHS	ADJUSTABLE 16 in, 17 in, 18 in, 19 in, 20 in (40 cm, 43 cm, 45 cm, 48 cm, 50 cm)
SEAT SURFACE HEIGHTS	ADJUSTABLE 14 in, 14.5 in, 15 in, 15.5 in, 16 in, 16.5 in, 17 in, 17.5 in, 18 in, 19 in (35 cm, 37 cm, 38 cm, 39 cm, 41 cm, 42 cm, 43 cm, 44 cm, 46 cm, 48 cm)
LIFETIME WARRANTY FRAME	16-Gauge tubular steel frame 10 YEARS



Solid seat pan offers support and is compatible with a variety of seat cushion options



Range of simple adjustments accommodates a variety of needs



View accessories, color options, order forms, and more!

Comfort Rehab Wheelchair





Elite

Rehab Wheelchair

Enhanced mobility and freedom



Rear-mount mag wheels facilitate hand propulsion, allowing users to engage with their surroundings



Adjustable tilt and recline help decrease postural deviations such as slumping, lateral lean, and head drop



Posterior tilt effectively opens the diaphragm improving digestion, oxygenation, and organ function



Two pressure-relieving seat options: Comfort Tension Seating® OR a solid seat pan with Matrix® Seating Series Cushions

matrix
SEATING SERIES

Shown with optional Matrix® Libra seat cushion

SPECIFICATIONS

INFINITELY ADJUSTABLE TILT	Up to 40°
INFINITELY ADJUSTABLE RECLINE	Up to 15°
WEIGHT CAPACITY	350 lbs. (158 kg)
SEAT WIDTHS	16 in, 18 in, 20 in, 22 in, 24 in, 26 in, 28 in (40 cm, 45 cm, 50 cm, 55 cm, 61 cm, 66 cm, 71 cm)
SEAT DEPTHS	17 in, 18.5 in, 20 in, 22 in (43cm, 46 cm, 50 cm, 56 cm)
SEAT SURFACE HEIGHTS	19 in, 20.5 in, 22 in, 23.5 in (48 cm, 51 cm, 55 cm, 59 cm)
LIFETIME WARRANTY FRAME	16-Gauge tubular steel frame 10 YEARS



View accessories, color options, order forms, and more!

Elite Rehab Wheelchair





Several of Broda's wheelchairs can be equipped with a factory-installed WC19 transport package, which enables the wheelchairs to be used in a variety of vehicles to safely travel with users without compromising comfort.



Save Money on Resident Transportation

Facilities can save thousands of dollars per month by offering their own resident transportation rather than using a 3rd party service. Broda's crash-tested, WC19 certified wheelchairs make it safe and easy to take residents where they need to go.



Save Time & Reduce Risk

Broda's wheelchairs can be operated by one caregiver. They roll into vehicles easily with no lifting required, lowering the injury risk to both employees and patients.



Crash Tested for Safety

Vehicle passengers riding in wheelchairs are 45 times more likely to be injured in a crash than a typical passenger.¹ Broda's wheelchairs meet all WC19 standards and are crash tested for optimal safety.



Cleanliness & Sanitation

Broda's wheelchair surfaces are easily disinfected and are fluid resistant. This protects the health of the passengers and the longevity of the wheelchair.

¹ Buning, M. E., Bertocci, G., Schneider, L. W., Manary, M., Karg, P., Brown, D., & Johnson, S. (2012). RESNA's position on wheelchairs used as seats in motor vehicles. *Assistive technology: the official journal of RESNA*, 24(2), 132-141.

TRANSPORT (NEMT)



View all transport wheelchairs online



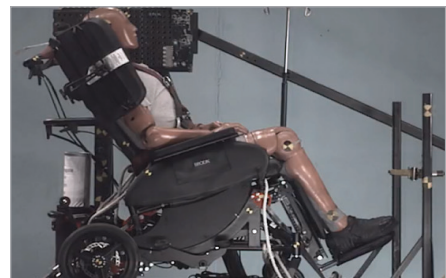


Transport Wheelchair

Save Money on Patient Transport



Provide transportation for your residents, saving thousands on 3rd party rides!



Crash tested and WC19 compliant for vehicle transportation



Elevating seat height makes transfers safe and easy



Tilt and recline functionality allow each patient to choose a comfortable position.

SPECIFICATIONS

INFINITELY ADJUSTABLE TILT	Up to 20°
INFINITELY ADJUSTABLE RECLINE	Up to 90°
WEIGHT CAPACITY	450 lbs. (204 kg)
SEAT WIDTHS	ADJUSTABLE 20 in - 24 in (51 cm - 61 cm)
SEAT DEPTHS	18.5 in (46 cm)
LIFETIME WARRANTY FRAME	16-Gauge tubular steel frame 5 YEARS



Request a quote!
Traversa Transport Wheelchair



brodaseating.com/traversa

For more information visit brodaseating.com

HYGIENE



View all hygiene wheelchairs online



“Broda’s **Revive Shower Commode** meets our patient’s needs. He indicates he feels safe and he is able to participate in his own care each morning. He is **safe at all times** while in the chair, and the caregivers are safe at all times while providing his care. All staff report being pleased with the commode and find it **much easier** to assist him.”

- Pam
Director of Nursing



Revive

Shower Commode

Durable bathing system for safe patient care



Dynamic tilting and reclining permits safe and thorough bathing



The recline feature and removable arm supports make it easy for thorough bathing and skin assessments.

SPECIFICATIONS

INFINITELY ADJUSTABLE TILT	Up to 12° (with posterior tilt) Up to 10° (with anterior tilt)
DEGREES OF RECLINE	Up to 67°
WEIGHT CAPACITY	400 lbs. (181kg)
SEAT WIDTHS	18 in, 22 in (45 cm, 56 cm)
SEAT DEPTHS	18 in (45 cm)
SEAT SURFACE HEIGHT	24.5 in (62 cm)
LIFETIME WARRANTY FRAME	16-Gauge Tubular Steel Frame 10 YEARS



Anterior and posterior tilt allows for easy user positioning



Rust-resistant frame and components are durable and long-lasting



View accessories, color options, order forms, and more!

Revive Shower Commode





Sentinel

Shower Commode

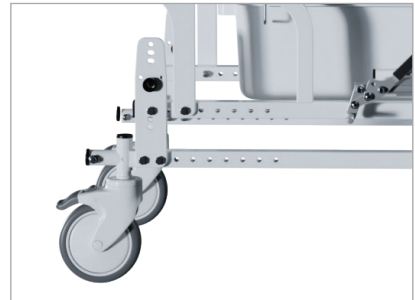
*Safe, Comfortable, Independent Bathing.
5X MORE DURABLE than a PVC Shower Chair!*



Features a range of simple adjustments for seat depth, wheel position, seat height, and more.



2-in-1 solid seat and commode is highly-versatile and easily mountable in all four directions



Configurable with either anti-rust, PVC mag wheels or cost-effective casters



Fold-up arm supports and swingaway leg supports allow for easy bathing and transfers

SPECIFICATIONS

WEIGHT CAPACITY	300 lbs. (136 kg)	
SEAT WIDTHS	18 in, 20 in, 22 in (46 cm, 51 cm, 56 cm)	
SEAT DEPTHS	ADJUSTABLE 16 in - 19 in (40 cm - 48 cm)	
BACK LENGTHS	16 in, 18 in, 20 in (41 cm, 46 cm, 51 cm)	Angle adjustable to 5°, 10°, 15°
SEAT SURFACE HEIGHTS	ADJUSTABLE 19.5 in (50 cm) - 23.5 in (60 cm)	
LIFETIME FRAME WARRANTY	16-Gauge Stainless Steel Frame 10 YEARS	
SPECIAL FEATURES	Simple Lateral Transfers and Self Propelled Mobility	



*View accessories, order forms,
and more!*

Sentinel Shower Commode





Revive

Bariatric Shower Commode

Durable bathing system for safe patient care



Concave back option accommodates and supports gluteal shelf



Dynamic tilting and reclining permits safe and thorough bathing



Anterior and posterior tilt allow for easy user positioning



Rust-resistant frame and components are durable and long-lasting

SPECIFICATIONS

INFINITELY ADJUSTABLE TILT	Up to 14° (of posterior tilt) Up to 8° (of anterior tilt)
DEGREES OF RECLINE	Up to 65°
WEIGHT CAPACITY	800 lbs. (362kg)
SEAT WIDTHS	27 in, 33 in (68 cm, 83 cm)
SEAT DEPTHS	21 in, 23 in (54 cm, 58 cm)
SEAT SURFACE HEIGHTS	21.5 in, 23.5 in (55 cm, 60 cm)
LIFETIME WARRANTY FRAME	16-Gauge Tubular Steel Frame 10 YEARS



View accessories, color options, order forms, and more!

Revive Bariatric Shower Commode



BEHAVIORAL



View all behavioral
wheelchairs online



“Our Tranquille gliders are always disappearing out of our common areas and end up in our patients’ rooms. We don’t know how they get there, but they **love them and prefer sitting in them more than anything else**. One patient with a back injury told us this was the only chair he could sit comfortably in. He wanted to take it home with him after his rehabilitation was complete.”

– Josiah D.
Facility Administrator



Tranquille Glider

Soothing seating for cognitive conditions



*Shown with NEW
Royal Purple frame color*



Gentle gliding motion



*Stimulates active patients and reduces
the need to wander*

SPECIFICATIONS

WEIGHT CAPACITY	250 lbs* (114 kg)
SEAT WIDTHS	18 in, 20 in (45 cm, 51 cm)
SEAT DEPTHS	17" (43 cm)
BACK HEIGHT	26", 32" (66 cm, 81 cm)
LIFETIME WARRANTY FRAME	16-Gauge Tubular Steel Frame 10 YEARS

**Adjustments available to accommodate larger patients*

***The Tranquille Glider is not a transport chair*

Small low-back, low-back & high-back models are available



*Auto-locking feature increases safety
and prevents falls*



*Comfort Tension Seating® increases
support and sitting tolerance*



***View accessories, color options,
order forms, and more!***

Tranquille Glider





Aspire

Pediatric Glider

Dynamic seating for pediatric settings



*Shown with NEW
Passion Pink frame color*



Gentle gliding motion calms and soothes agitation



Durable frame & caregiver lock increases user stability and safety

SPECIFICATIONS


WEIGHT CAPACITY	Up to 200 lbs (90kg)			
	SEAT WIDTH	SEAT DEPTH	SEAT HEIGHT	BACK HEIGHT
SMALL	12 in (30 cm)	10 in (25 cm)	10 in (25 cm)	18 in (45 cm)
MEDIUM	14 in (35 cm)	12 in (30 cm)	12 in (30 cm)	20 in (50 cm)
LARGE	16 in (40 cm)	14 in (35 cm)	14 in (35 cm)	22 in (58 cm)
LIFETIME WARRANTY FRAME	16-Gauge Tubular Steel Frame 10 YEARS			



Stimulates active users to reduce anxiety and improve contentment



Comfort Tension Seating® increases support and sitting tolerance


View accessories, color options, order forms, and more!
Aspire Pediatric Glider


Additional Positioning Padding (APP)

RECOMMENDED FOR:

Use with positioning wheelchairs to give patients extra comfort.



APP shown on the Synthesis Positioning Wheelchair

- Seat Cushion
- Back and Head Support
- Foot and Calf Support
- Lateral Shoulder Support Cushions

Slim Posture Padding (SPP)

RECOMMENDED FOR:

Use with pedal wheelchairs for extra comfort with a lower profile.



SPP shown on the Encore Pedal Wheelchair

- Seat Cushion
- Back Support
- Extended Back Support*

*for tall back height options

Huntington's Special Padding (HSP)

RECOMMENDED FOR:

Users with neurological and movement disorders.



HSP shown on the Synthesis Positioning Wheelchair

- Long Lateral Shoulder Supports
- Thigh Positioning Strap
- Long Footbox

Acute Care Configuration (ACC)

RECOMMENDED FOR:

Healthcare environments where infection control and durability are a high priority.



ACC shown on the Synthesis Positioning Wheelchair

- Full Vinyl Covers
- ABS Footrest with Calf and Sole Pads
- Covers Comfort Tension Seating® straps for easy cleaning

Comfort is Essential



For convenience, all Matrix® options ship on-chair for Broda Rehab Wheelchairs

Libra Cushion



Multi Cushion



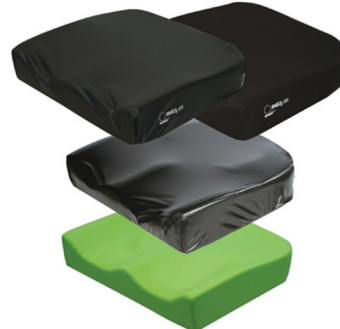
Vi Cushion



PSP Cushion



PS Cushion



Elite E2™ Back



Elite Backs (TR/Deep)



PB Back (Deep)



Head & Neck Support

The Matrix® Seating series pairs perfectly with Broda's Rehab wheelchairs. Additional cushion, back, and headrest accessories available.



*Loxx
Head Support*



*Elan
Head Support*



*Standard Head
Support Pad*



*4-Point Head
Support Pad*



*Hug Head
Support Pad*



Flipp Hardware

Upgrade to the Flipp Hardware, and with the push of a button, you can flip back the head support pad. Compatible with both the Loxx and the Elan head support hardware.

Frame Accessories

- O2 Soft Carry Bag
- IV Pole
- Rear, Front, or Lateral Stabilizers
- Lateral Torso Supports



O2 Soft Carry Bag



Lateral Supports

Padding & Arm Supports

- Long Arm Supports
- Side Arm Support
- Side Reduction Pads
- Arm Trough



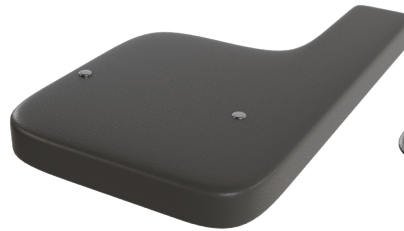
Arm Trough



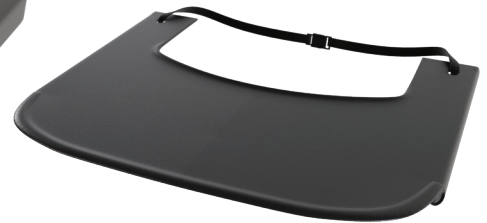
Side Arm Support

Trays

- Slide-On Full Tray
- Slide-On Half Tray
- Padded Tray Cover



Slide-On Half Tray



Slide-On Full Tray

Leg & Foot Support

- ABS Leg Support
- Foot Box
- Swing-Away Leg Support
- Leg Support Panel
- Elevating Leg Supports



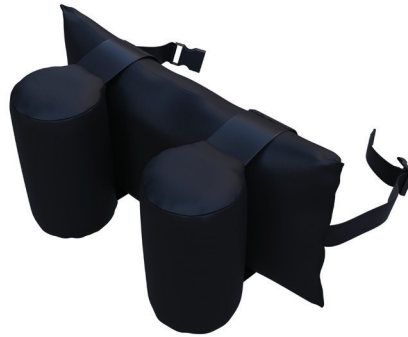
Leg Support



Foot Box

Head & Neck Support

- Contoured Neckrest Pad
- Neckrest with Two Round Bolsters



Neck Support with Bolsters



Contoured Head Support

Positioning Straps

- Thigh Positioning Belt
- Pelvic Positioning Belt



Padded Thigh Belt



Pelvic Positioning Belt



View our parts and accessories guide.



SPECIFICATIONS



	<i>Synthesis Positioning Wheelchair</i>	<i>Elite Positioning Wheelchair</i> <small>AVAILABLE ONLY IN CANADA AND AUSTRALIA</small>	<i>Elite Tilt Wheelchair</i>	<i>Midline Positioning Wheelchair</i>	<i>Centric Positioning Wheelchair</i>	<i>Vanguard® Bariatric Wheelchair</i>
WEIGHT CAPACITY	Up to 350 lbs.	Up to 350 lbs.	Up to 350 lbs.	Up to 350 lbs.	Up to 250 lbs.	Up to 600 lbs.
DEGREES OF TILT	Up to 40°	Up to 40°	Up to 40°	Up to 38°	Up to 25°	Up to 30° Posterior Up to 10° Anterior
DEGREES OF RECLINE	Up to 90° <i>Trendelenburg capable</i>	<i>Positioning: Up to 90° Trendelenburg Capable</i> <i>Tilt: N/A</i>	Up to 90° <i>Trendelenburg capable</i>	Up to 90° <i>Trendelenburg capable</i>	Up to 45°	Up to 45°
SEAT WIDTHS AVAILABLE	16", 18", 20", 22", 24", 26"	16", 18", 20", 22", 24", 26", 28"	16", 18", 20", 22", 24", 26", 28"	16", 18", 20", 22", 24", 26", 28"	16", 18", 20", 22", 24", 26", 28"	24", 26", 28", 30"
SEAT DEPTHS	Standard: 17", 18.5", 20", 22" WC19 Package: 17", 18.5", 20"	15.5", 17", 18.5", 20", 22"	15.5", 17", 18.5", 20"	15.5", 17", 18.5", 20"	15.5", 17", 18.5", 20"	Adjustable: 21" or 23"
BACK HEIGHTS	32", 33.5", 35"	32", 33.5", 35"	32", 33.5", 35"	32", 33.5", 35"	32", 33.5", 35"	Adjustable: 32", 34", 36", 38", 40"
SEAT SURFACE HEIGHTS	19.5", 20.5", 22", 23.5"	19.5", 20.5", 22", 23.5"	19.5", 20.5", 22", 23.5"	Adjustable 17", 18", 19", 20", 21", 22"	Adjustable 19.5", 20.5", 21.5"	Adjustable 20", 21", 22", 23", 24"
MAG WHEELS	14" Mid Mounted 14" Rear Mounted 20" Rear Mounted	14" Mid Mounted 14" Rear Mounted 20" Rear Mounted	14" Mid Mounted 14" Rear Mounted 20" Rear Mounted	Front Mounted 20", 22", 24" Rear Mounted 20", 22"	Front Mounted 20", 22", 24" Rear Mounted 20", 22", 24"	N/A
RECOMMENDED SEATING	Comfort Tension Seating® Additional Positioning Padding (APP) Cushion	Comfort Tension Seating® Additional Positioning Padding (APP) Cushion	Comfort Tension Seating® Additional Positioning Padding (APP) Cushion	Comfort Tension Seating® Additional Positioning Padding (APP) Cushion	Comfort Tension Seating® Additional Positioning Padding (APP) Cushion	Comfort Tension Seating®
RECOMMENDED BACK SUPPORT	Comfort Tension Seating® Additional Positioning Padding (APP) Back	Comfort Tension Seating® Additional Positioning Padding (APP) Back	Comfort Tension Seating® Additional Positioning Padding (APP) Back	Comfort Tension Seating® Additional Positioning Padding (APP) Back	Comfort Tension Seating® Additional Positioning Padding (APP) Back	Comfort Tension Seating®
RECOMMENDED HEAD SUPPORT	Broda® Neck Support	Broda® Neck Support	Broda® Neck Support	Broda® Neck Support	Broda® Neck Support	Broda® Neck Support



	<i>Encore Pedal Wheelchair</i>	<i>Sashay Pedal Wheelchair</i>	<i>Latitude Pedal Wheelchair</i>	<i>Tranquille Glider</i>	<i>Aspire Pediatric Glider</i>
WEIGHT CAPACITY	Up to 350 lbs. <i>(Non-Rocking)</i> Up to 250 lbs. <i>(with Dynamic Rocking)</i>	Up to 350 lbs.	Up to 250 lbs.	Up to 250 lb.	Up to 200 lb.
DEGREES OF TILT	Up to 40°	Up to 18°	Up to 33°	N/A	N/A
DEGREES OF RECLINE	N/A	N/A	N/A	N/A	N/A
SEAT WIDTHS	Non-Rocking 16", 18", 20", 22", 24", 26" 28" Dynamic Rocking 16", 18", 20", 22"	16", 18", 20", 22", 24", 26", 28"	16", 18", 20", 22"	18", 20"	12", 14", 16"
SEAT DEPTHS	17", 18.5", 20"	15.5", 17", 18.5", 20"	15.5", 17", 18.5", 20"	17"	10", 12", 14"
BACK HEIGHTS	22", 32", 33.5", 35"	32", 33.5", 35"	32", 33.5", 35"	26", 32"	18", 20", 22"
SEAT SURFACE HEIGHTS	Adjustable 12.5" - 17.5" <i>(Non-Rocking)</i> Adjustable 14" - 19" <i>(with Dynamic Rocking)</i>	Adjustable 12.5", 13.5", 14.5", 15.5, 16.5", 17.5"	Adjustable 14", 15", 16", 17, 18" 19"	16", 18"	10", 12", 14"
MAG WHEELS	Front Mounted 20" or 22" Rear Mounted 14"	Front Mounted 20", 22" Rear Mounted 20", 22"	Front Mounted 20", 22" Rear Mounted 20", 22"	N/A	N/A
RECOMMENDED SEATING	Comfort Tension Seating* Slim Positioning Padding (SPP) Cushion	Comfort Tension Seating* Slim Positioning Padding (SPP) Cushion	Comfort Tension Seating* Slim Positioning Padding (SPP) Cushion	N/A	N/A
RECOMMENDED BACK SUPPORT	Comfort Tension Seating* Slim Posture Padding (SPP) Back	Comfort Tension Seating* Slim Posture Padding (SPP) Back	Comfort Tension Seating* Slim Posture Padding (SPP) Back	N/A.	N/A
RECOMMENDED HEAD SUPPORT	Matrix® Loxx Headrest (low back) Broda® Neck Support (tall back)	Broda® Neck Support	Broda® Neck Support	Broda® Neck Support	Broda® Neck Support



	<i>Encore Rehab Wheelchair</i>	<i>Comfort Rehab Wheelchair</i>	<i>Synthesis Rehab Wheelchair</i> <i>AVAILABLE ONLY IN THE UNITED STATES</i>	<i>Elite Rehab Wheelchair</i>	<i>Latitude Rehab Wheelchair</i>
WEIGHT CAPACITY	Up to 250 lbs.	Up to 250 lbs.	Up to 350 lbs.	Up to 350 lbs.	Up to 250 lbs.
DEGREES OF TILT	Up to 33° <i>(with dynamic rocking)</i>	Up to 45°	Up to 40°	Up to 40°	Up to 33° <i>(with Dynamic Rocking)</i>
DEGREES OF RECLINE	N/A	N/A	Up to 90°	15°	N/A
SEAT WIDTHS	16", 18", 20", 22"	16", 18", 20", 22"	16", 18", 20", 22", 24", 26"	16", 18", 20", 22", 24", 26", 28"	16", 18", 20", 22"
SEAT DEPTHS	16", 17", 18", 19", 20"	16", 17", 18", 19", 20"	17", 18.5", 20"	17", 18.5", 20", 22"	15.5", 17", 18.5", 20"
BACK CANE ANGLES	5°, 10°, 15°, 20°	5°, 10°, 15°, 20°	N/A	N/A	N/A
BACK HEIGHTS	16", 18", 21", 24"	16", 18", 21", 24"	32", 33.5", 35"	32"	32", 33.5", 35"
SEAT SURFACE HEIGHTS	Adjustable 14", 15", 16", 17", 18", 19"	Adjustable 14", 15", 15.5", 16", 16.5", 17", 17.5", 18", 19"	19.5", 20.5", 22", 23.5"	20.5"	Adjustable 14", 15", 16", 17", 18", 19"
MAG WHEELS	Front Mounted 20", 22"	Rear Mounted 20", 22", 24"	Rear Mounted 14", 20" Mid Mounted 14"	Rear Mounted 14", 20", 22"	Front or Rear Mounted 20", 22"
RECOMMENDED SEATING	Matrx® Libra Cushion	Matrx® Libra Cushion	Matrx® Libra Cushion	Matrx® Libra Cushion	Matrx® Libra Cushion
RECOMMENDED BACK SUPPORT	Matrx® E2 Back Support	Matrx® E2 Back Support	Matrx® E2 Back Support	Comfort Tension Seating® Slim Posture Padding (SPP) Back	Comfort Tension Seating® Slim Posture Padding (SPP) Back
RECOMMENDED HEAD SUPPORT	Matrx® Loxx Headrest	Matrx® Loxx Headrest	Broda Neck Support	Broda Neck Support	Broda Neck Support



	<i>Revive Shower Commode</i>	<i>Revive Bariatric Shower Commode</i>	<i>Sentinel Shower Commode</i>
WEIGHT CAPACITY	Up to 400 lbs.	Up to 800 lbs.	Up to 300 lbs.
DEGREES OF TILT	Up to 12° Posterior Up to 10° Anterior	Up to 14° Posterior Up to 8° Anterior	N/A
DEGREES OF RECLINE	Up to 67°	Up to 67°	ADJUSTABLE Back Canes 5°, 10°, 15°
SEAT WIDTHS	18", 22"	27"-33"	18", 20", 22"
SEAT DEPTHS	18"	21", 23"	Adjustable 16" - 19"
BACK HEIGHTS	26"	26"	Adjustable 16", 18", 20"
SEAT SURFACE HEIGHTS	24.5"	21", 23"	19.5", 23.5"
MAG WHEELS	N/A	N/A	Rear Mounted 24"
RECOMMENDED HEAD SUPPORT	Broda® Neck Support	Broda® Neck Support	N/A

	<i>Traversa® Transport Wheelchair</i>
WEIGHT CAPACITY	Up to 450 lbs.
DEGREES OF TILT	Up to 40°
DEGREES OF RECLINE	Up to 90°
SEAT WIDTH	ADJUSTABLE 20 in - 24 in
SEAT DEPTH	18.5"
BACK HEIGHT	32"
SEAT SURFACE HEIGHTS	ADJUSTABLE 22.5"-32"

FRAME OPTIONS

	BLACK	BRONZE	HAMMER GREY	TUNGSTEN SAND	SATIN NICKEL	CARMINE RED	OCEAN BLUE	ZINC YELLOW	DEEP ORANGE	PASSION PINK	ROYAL PURPLE
Aspire Glider		●		●	●	●	●			●	●
Centric Positioning Wheelchair			●								
Comfort Rehab Wheelchair	●	●		●	●	●	●	●	●	●	●
Elite Positioning Wheelchair (CAN)	●		●								
Encore Rehab Wheelchair	●	●		●	●	●	●	●	●	●	●
Elite Tilt Wheelchair	●		●								
Encore Pedal Wheelchair	●	●		●	●	●	●	●	●	●	●
Elite Rehab Wheelchair	●	●	●	●	●	●	●	●	●	●	●
Latitude Pedal Wheelchair	●		●								
Latitude Rehab Wheelchair	●		●								
Midline Positioning Wheelchair	●		●								
Sashay Pedal Wheelchair	●		●								
Synthesis Positioning Wheelchair	●	●		●	●	●	●	●		●	●
Synthesis Rehab Wheelchair (USA)	●	●		●	●	●	●	●		●	●
Tranquille Glider		●	●	●	●	●	●			●	●
Vanguard Positioning Wheelchair			●								
Traversa® Transport Wheelchair								●			
	BLACK	BRONZE	HAMMER GREY	TUNGSTEN SAND	SATIN NICKEL	CARMINE RED	OCEAN BLUE	ZINC YELLOW	DEEP ORANGE	PASSION PINK	ROYAL PURPLE

UPHOLSTERY OPTIONS

	MODENA BLACK	INTERLACE GRAPHITE	INTERLACE ESPRESSO	INTERLACE INDIGO	BEELINE FORGE	BEELINE PORTOBELLO
Aspire Glider	●			●		
Centric Positioning Wheelchair						
Comfort Rehab Wheelchair						
Elite Positioning Wheelchair <i>(CAN)</i>						
Elite Rehab Wheelchair	●					
Elite Tilt Wheelchair						
Encore Pedal Wheelchair	●	●	●	●	●	●
Encore Rehab Wheelchair	●	●	●	●	●	●
Latitude Pedal Wheelchair	●	●	●	●	●	●
Latitude Rehab Wheelchair	●	●	●	●	●	●
Midline Positioning Wheelchair						
Sashay Pedal Wheelchair	●	●	●	●	●	●
Synthesis Positioning Wheelchair	●	●	●	●	●	●
Synthesis Rehab Wheelchair <i>(USA)</i>	●	●	●	●	●	●
Synthesis Transport Wheelchair	●	●	●	●		●
Tranquille Glider	●	●	●	●		●
Vanguard Positioning Wheelchair						
Traversa® Transport Wheelchair	●					

	BEELINE GEYSER	BEELINE FOSSIL	SILVERTEX CARBON	SILVERTEX MOCHA	SILVERTEX SAPPHIRE	SILVERTEX ACID
Aspire Glider	●	●	●	●		●
Centric Positioning Wheelchair					●	
Comfort Rehab Wheelchair						
Elite Positioning Wheelchair (CAN)					●	
Elite Rehab Wheelchair					●	
Elite Tilt Wheelchair					●	
Encore Pedal Wheelchair	●					
Encore Rehab Wheelchair						
Latitude Pedal Wheelchair	●	●			●	
Latitude Rehab Wheelchair	●	●			●	
Midline Positioning Wheelchair					●	
Sashay Pedal Wheelchair	●	●			●	
Synthesis Positioning Wheelchair	●	●				
Synthesis Rehab Wheelchair (USA)	●	●				
Synthesis Transport Wheelchair	●	●				
Tranquille Glider	●		●	●	●	●
Vanguard Positioning Wheelchair					●	
Traversa® Transport Wheelchair						
	BEELINE GEYSER	BEELINE FOSSIL	SILVERTEX CARBON	SILVERTEX MOCHA	SILVERTEX SAPPHIRE	SILVERTEX ACID

	RENAISSANCE BURGUNDY	MILANO STITCH BARK	RENAISSANCE CHARCOAL	KALEIDOSCOPE CHOCOLATE	KALEIDOSCOPE SMOKEHOUSE	RETRO CAMO
Aspire Glider		●				
Centric Positioning Wheelchair	●		●			
Comfort Rehab Wheelchair						
Elite Positioning Wheelchair (CAN)	●	●	●			
Elite Rehab Wheelchair	●	●	●			
Elite Tilt Wheelchair	●	●	●			
Encore Pedal Wheelchair					●	●
Encore Rehab Wheelchair						
Latitude Pedal Wheelchair	●		●	●	●	●
Latitude Rehab Wheelchair	●		●	●	●	●
Midline Positioning Wheelchair	●		●			
Sashay Pedal Wheelchair	●		●	●	●	●
Synthesis Positioning Wheelchair				●	●	●
Synthesis Rehab Wheelchair (USA)				●	●	●
Tranquille Glider	●	●	●	●	●	
Vanguard Positioning Wheelchair	●		●			
Traversa® Transport Wheelchair						

Configure Your Wheelchair

STEP 1: Select Your Wheelchair Type

POSITIONING	PEDAL	REHAB	HYGIENE	GLIDER
Tilt and recline functionality for the highest level of comfort and care. <i>Caregiver-Propelled</i>	Safe and independent mobility for any care setting. <i>Self-Propelled</i>	Durable and versatile wheelchairs for rehab and therapy. <i>E1161 Coded</i>	Shower Commode wheelchairs for a comfortable bathing experience	Smooth gliding motion in a stationary chair.
Continue to SECTION A	Continue to SECTION B	Continue to SECTION C	Continue to SECTION D	Continue to SECTION E

Features, Functionality, & Customization Level

SECTION A:

Positioning Wheelchairs

(Caregiver-Propelled)

Select a positioning wheelchair and optional packages.

BEST

BASIC



Synthesis Positioning Wheelchair	Elite Positioning Wheelchair Elite Tilt Wheelchair	Midline Positioning Wheelchair	Centric Positioning Wheelchair	BARIATRIC Vanguard Bariatric Wheelchair
350 lbs. weight capacity Up to 40° Tilt Up to 90° Recline	350 lbs. weight capacity Up to 40° Tilt Up to 90° Recline	350 lbs. weight capacity Up to 38° Tilt Up to 90° Recline	250 lbs. weight capacity Up to 25° Tilt Up to 45° Recline	
Optional Add-ons:	<ul style="list-style-type: none"> WC19 Transport Package Additional Positioning Padding (APP) Huntington's Special Padding (HSP) 		<ul style="list-style-type: none"> Acute Care Configuration (ACC) Slim Posture Padding (SPP) 	

Features, Functionality, & Customization Level

SECTION B:

Pedal Wheelchairs

(Self-Propelled)

Select a pedal wheelchair and optional packages.

BEST

BASIC




Encore Pedal Wheelchair with optional Dynamic Rocking feature	Latitude Pedal Wheelchair with Dynamic Rocking Feature	Sashay Pedal Wheelchair
250 lbs. weight capacity (rocking) 350 lbs. weight capacity (non-rocking) 500 lbs. weight capacity (Heavy Duty Package) Up to 33° Tilt	250 lbs. weight capacity Up to 33° Tilt	350 lbs. weight capacity Up to 18° Tilt
Optional Add-ons:	<ul style="list-style-type: none"> WC19 Transport Package Slim Posture Padding (SPP) Additional Positioning Padding (APP) Heavy Duty Package for 500 lb. weight capacity (Encore Pedal) 	

NOTE:

See [pg. 37](#) to view popular accessories, and [pg. 43](#) for frame and upholstery color options.

SECTION C: Rehab Wheelchairs

Select a rehab wheelchair and optional WC19 package.

 = WC19 Certified for vehicle transit.

MORE INDEPENDENT

LESS INDEPENDENT



Encore Rehab

250 lbs. weight capacity
Up to 33° Tilt
Dynamic Rocking
HCPCS E1161



Latitude Rehab

250 lbs. weight capacity
Up to 33° Tilt
Dynamic Rocking
HCPCS E1161



Comfort Rehab

250 lbs. weight capacity
Up to 45° Tilt
Highly Adjustable
HCPCS E1161



Synthesis Rehab

350 lbs. weight capacity
Up to 40° Tilt
Up to 90° Recline
HCPCS E1161



Elite Rehab

350 lbs. weight capacity
Up to 40° Tilt
Up to 15° Recline
HCPCS E1161

All Matrix options ship pre-installed on your Broda wheelchair.

STEP C1: Select Chair Seating

matrix
SEATING SERIES

MORE PRESSURE REDUCTION

LESS PRESSURE REDUCTION



Libra Cushion
HCPCS E2624 / E2625



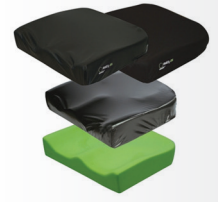
Multi Cushion
E2607 / E2608



Vi Cushion
E2607 / E2608



PSP Cushion
E2607



PS Cushion
E2605 / E2606

Encore Rehab or Comfort Rehab

Latitude Rehab or Elite Rehab

STEP C2: Select Back Support

matrix
SEATING SERIES

MORE SUPPORTIVE

LESS SUPPORTIVE



E2 & E2 Deep Back
HCPCS E2620 / E2621



Elite (TR/Deep)
HCPCS E2620 / E2621



PB & PB Deep
HCPCS E2615



- Comfort Tension Seating®
 - Additional Positioning Padding (APP)
 - Slim Posture Padding (SPP)
- HCPCS E2601 / E2611

Encore Rehab or Comfort Rehab

STEP C3: Select Head Support

matrix
SEATING SERIES

MORE SUPPORTIVE

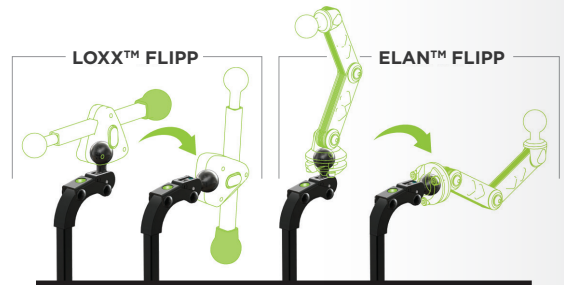
LESS SUPPORTIVE



Loxx head support
HCPCS E0955 / E1028



Elan head support
HCPCS E0955 / E1028



HCPCS codes supplied are for reference only and do not ensure coverage or payment. The HCPCS provided are based on our interpretation of the code definitions. HCPCS codes are not intended to be, nor should be considered billing or legal advice. Providers are responsible for determining the appropriate billing codes when submitting claims to the Medicare Program and should consult an attorney or other advisor to discuss specific situations in further detail.

Configure Your Wheelchair, cont.

SECTION D: Hygiene Wheelchairs

INDEPENDENT USER



**Sentinel
Shower Commode**

300 lbs. weight capacity
No Tilt or Recline



**Revive
Shower Commode**

600 lbs. weight capacity
12° of Posterior Tilt
10° Anterior Tilt
67° of Recline

DEPENDENT USER



**Revive Bariatric
Shower Commode**

800 lbs. weight capacity
14° of Posterior Tilt
8° Anterior Tilt
67° of Recline

BARIATRIC

SECTION E: Gliders



ADULT

Tranquille Glider

250 lbs. weight capacity



PEDIATRIC

**Aspire
Pediatric Glider**

200 lbs. weight capacity

ANATOMICAL ASSESSMENT

Contact Name: _____ Phone: _____ Date: _____
 Patient Name: _____ Height: _____ Weight: _____

Please measure the patient at their seated position while sitting in an upright position and add 1"-2" inches to obtain proper seat width. Please use a soft flexible measuring tape to avoid injuries such as skin tears. This chart is used for patients weighing up to 250lbs. For patients weighing more than 250lbs, please see our Bariatric Anatomical Assessment.

- Shoulder Width** - Measure the patient at the widest point of the shoulders.
- Seat Width** - With the patient sitting in an upright position, measure the width of the wheelchair at the widest point.
- Width at Arms** - Measure across the widest point of the arms.
- Head Height** - Measure from the sitting surface to the top of the head.
- Seat Length** - Measure from the sitting surface to the base of the seat.
- Seat Depth** - is measured from the posterior base(s) of the footrests to the posterior backrest of the seat.
- Seat Height** - is the vertical distance a seated person to the floor. Measure from the floor to the top of the seat at the widest point of the seat. For the front of the seat, measure from the floor to the top of the seat at the widest point of the seat.
- Armrest Length** - Measure from the sitting surface to the 90-degree angle of the elbow to the right hip.

CLIENT MEASUREMENTS:
(Write Measurements inside of circles)

BRODA
Medical Seating

Anatomical Assessment Form

BARIATRIC ANATOMICAL ASSESSMENT

Assessor's Name: _____ Phone: _____ Date: _____
 Patient's Name: _____ Height: _____ Weight: _____

Please measure the patient at their seated position while sitting in an upright position and add 1"-2" inches to obtain proper seat width. Please use a soft flexible measuring tape to avoid injuries such as skin tears. This chart is used for the assessment of bariatric patients. For non-bariatric patients, please use our Standard Anatomical Assessment.

- Shoulder Width** - Measure the patient at the widest point of the upper arms/shoulders.
- Seat Width** - With the patient sitting in an upright position, measure across from lateral elbow to lateral elbow. This measurement is the widest measurement width for the chair's seatrest.
- Width at Arms** - While sitting on a firm surface, measure the top height at the widest point.
- Head Height** - Measure across the widest point from the forehead.
- Seat Length** - Measure from the sitting surface to the base of the seat.
- Seat Depth** - is measured from the posterior base(s) of the footrests to the posterior backrest of the seat.
- Armrest Length** - With the patient seated, place the shoulder in a flexed position and arm parallel to the floor, measure from the sitting surface to the elbow.
- Seat Height** - is measured from the posterior base(s) of the footrests to the posterior backrest of the seat.
- Seat Height** - is the vertical distance a seated person to the floor. Measure from the floor to the top of the seat at the widest point of the seat. For the front of the seat, measure from the floor to the top of the seat at the widest point of the seat. For the front of the seat, measure from the floor to the top of the seat at the widest point of the seat.
- Armrest Length** - With the shoulder in a flexed position, measure from the 90-degree angle (elbow) at the elbow to the right hip.

CLIENT MEASUREMENTS:
(Write Measurements inside of circles)

BRODA
Medical Seating

**Bariatric Anatomical
Assessment Form**

Resources

CASE EVALUATION FORM BRODA

Date of Evaluation: _____ Primary Diagnosis: _____
 Patient Name (optional): _____ Age: _____ Sex: M F
 BRODA Case number and address: _____
 Recipient specific seating conditions and needs: _____
Provider: Please provide information relative to the evaluation prior to the placement of a BRODA chair.
 Cognitive (interactive with surroundings) (non-interactive) Able to make needs known
 Psychotropic medication used? Yes No, None/Control
 Non-reversible used? Yes No, None/Control
 Functional Abilities, ADL Status is referenced in wheelchair user **Plan to the placement of BRODA**

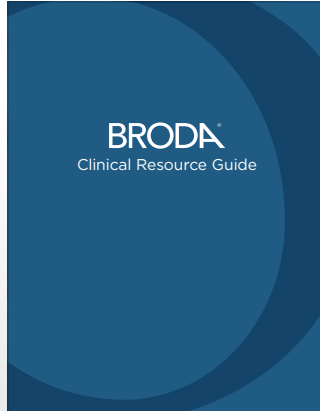
ADL	Independent	Transfer with Assistance	Assisted (hand)	Assisted (foot)	Not done	Comments
Self Care						
Activities						
Transfer						

History of falls: At risk from prolonged sitting At risk from falls None
 Risk factors: Blurry vision Instability Impaired circulation or hydration status
 Broda Case used: _____
 Able to perform self-pressure relief: Yes, method used No, why? _____
All interventions and outcomes observed/recorded. Plan to the placement of BRODA

Intervention	Chair Model	Outcome

 BRODA
 CASE EVALUATION FORM

Case Evaluation Form



Clinical Resource Guide

BRODA Cleaning & Disinfection Guidelines

BRODA's products and infection prevention and control by utilizing high quality healthcare-graded material. Cleaning and sanitizing BRODA's products are easy for users, caregivers, and healthcare facilities to minimize bacterial and viral disease vectors.

The properties of aerosol vinyl upholstery and other environmental contact surfaces intrinsically provide infection control measures:

- Impervious to moisture:** creates a fluid barrier.
- Nonporous material:** ease of cleaning and disinfection.
- Durable surface:** prevents tears, scuffs and cracking resistant.

VINYL UPHOLSTERY FABRICS

For SPINALINO brand vinyl coverage protected with PERMAPROK™, a detailed Cleaning Guide can be found at www.brodaeating.com

- Spills or Stains:** If possible, remove the spill with a damp cloth using soap and water. Do not clean under and dry.
- Hard to Clean Spots:** For more difficult spots or stains and mild disinfection, spray a concentrated cleaner directly on the spill or stain and wipe with a clean cloth. Bleaching recommends Formula 409® or Fantastik® Spray Cleaner for this process.
- Disinfection:** For disinfection and application, use a hospital grade quaternary cleaning agent or a 1:4 mixture of bleach and water directly on the equipment. Using a steam vapor cleaner with a steam temperature of 260°F - 270°F is also effective on parts of the chairs that are not susceptible to heat damage, such as the fabric and frame components.

Upholstery	Interface, Easy Maintenance, Staines, Resistance	Seating
Content	Vinyl / Urethane Topcoat	100% Polyurethane / PVC Free
Finish	Soft-Plastcoat	N/A
Performance	100,000 D.L.U. (Standard Pigments) (Durable) AATCC Blue Stain (2000 hrs) No Heavy Metals, Formaldehyde Free	100,000 D.L.U. Hydrolysis tests or exceeds ASTM D5680 D-1000 (As Required) Sealed Environmental Impact (GREENGUARD Certified, PVC-Free)
Flame Resistance	California TB 117-2015 NFPA 260 Class 1	California TB 117-2015 NFPA 260 Class 1
Maintenence/Cleaning	1:4 bleach / water, peroxide & quaternary ammonium at the recommended dilution	Steam-based Cleaner 1:4 Mix of Bleach & Water

Note: Do not use petroleum based cleaning products on any vinyl surface as it will cause the vinyl to become brittle and can damage the seating surface and cushions.

Cleaning & Disinfection Guide

BRODA Actual Size Guide

This guide provides actual sizes of Broda products and standard dimensions for wheelchair, and other care when determining accessibility.

Positioning Wheelchairs				Rehab Wheelchairs				Standard Seating with 20" High Seating			
Chair	Seat Width	Seat Depth	Height (inches)	Chair	Seat Width	Seat Depth	Height (inches)	Chair	Seat Width	Seat Depth	Height (inches)
STANDARD POSITIONING WHEELCHAIR	16	18	20	16	18	18	20	16	18	18	20
	18	20	22		20	20	22		20	20	22
	20	22	24		22	22	24		22	22	24
	22	24	26		24	24	26		24	24	26
	24	26	28		26	26	28		26	26	28
	26	28	30		28	28	30		28	28	30
	28	30	32		30	30	32		30	30	32
	30	32	34		32	32	34		32	32	34
	32	34	36		34	34	36		34	34	36
	34	36	38		36	36	38		36	36	38
	36	38	40		38	38	40		38	38	40
	38	40	42		40	40	42		40	40	42
	40	42	44		42	42	44		42	42	44
	42	44	46		44	44	46		44	44	46
	44	46	48		46	46	48		46	46	48
	46	48	50		48	48	50		48	48	50
	48	50	52		50	50	52		50	50	52
	50	52	54		52	52	54		52	52	54
	52	54	56		54	54	56		54	54	56
	54	56	58		56	56	58		56	56	58
	56	58	60		58	58	60		58	58	60
	58	60	62		60	60	62		60	60	62
	60	62	64		62	62	64		62	62	64
	62	64	66		64	64	66		64	64	66
	64	66	68		66	66	68		66	66	68
	66	68	70		68	68	70		68	68	70
	68	70	72		70	70	72		70	70	72
	70	72	74		72	72	74		72	72	74
	72	74	76		74	74	76		74	74	76
	74	76	78		76	76	78		76	76	78
	76	78	80		78	78	80		78	78	80
	78	80	82		80	80	82		80	80	82
	80	82	84		82	82	84		82	82	84
	82	84	86		84	84	86		84	84	86
	84	86	88		86	86	88		86	86	88
	86	88	90		88	88	90		88	88	90
	88	90	92		90	90	92		90	90	92
	90	92	94		92	92	94		92	92	94
	92	94	96		94	94	96		94	94	96
	94	96	98		96	96	98		96	96	98
	96	98	100		98	98	100		98	98	100
	98	100	102		100	100	102		100	100	102
	100	102	104		102	102	104		102	102	104
	102	104	106		104	104	106		104	104	106
	104	106	108		106	106	108		106	106	108
	106	108	110		108	108	110		108	108	110
	108	110	112		110	110	112		110	110	112
	110	112	114		112	112	114		112	112	114
	112	114	116		114	114	116		114	114	116
	114	116	118		116	116	118		116	116	118
	116	118	120		118	118	120		118	118	120
	118	120	122		120	120	122		120	120	122
	120	122	124		122	122	124		122	122	124
	122	124	126		124	124	126		124	124	126
	124	126	128		126	126	128		126	126	128
	126	128	130		128	128	130		128	128	130
	128	130	132		130	130	132		130	130	132
	130	132	134		132	132	134		132	132	134
	132	134	136		134	134	136		134	134	136
	134	136	138		136	136	138		136	136	138
	136	138	140		138	138	140		138	138	140
	138	140	142		140	140	142		140	140	142
	140	142	144		142	142	144		142	142	144
	142	144	146		144	144	146		144	144	146
	144	146	148		146	146	148		146	146	148
	146	148	150		148	148	150		148	148	150
	148	150	152		150	150	152		150	150	152
	150	152	154		152	152	154		152	152	154
	152	154	156		154	154	156		154	154	156
	154	156	158		156	156	158		156	156	158
	156	158	160		158	158	160		158	158	160
	158	160	162		160	160	162		160	160	162
	160	162	164		162	162	164		162	162	164
	162	164	166		164	164	166		164	164	166
	164	166	168		166	166	168		166	166	168
	166	168	170		168	168	170		168	168	170
	168	170	172		170	170	172		170	170	172
	170	172	174		172	172	174		172	172	174
	172	174	176		174	174	176		174	174	176
	174	176	178		176	176	178		176	176	178
	176	178	180		178	178	180		178	178	180
	178	180	182		180	180	182		180	180	182
	180	182	184		182	182	184		182	182	184
	182	184	186		184	184	186		184	184	186
	184	186	188		186	186	188		186	186	188
	186	188	190		188	188	190		188	188	190
	188	190	192		190	190	192		190	190	192
	190	192	194		192	192	194		192	192	194
	192	194	196		194	194	196		194	194	196
	194	196	198		196	196	198		196	196	198
	196	198	200		198	198	200		198	198	200

Standard Seating with 20" High Seating

Encore Rehab (20" seat width) Average Door

Standard Door Size 36" wide

Standard Door Size 30" or 32" wide

Double Doors 72" wide

Notes: All chair depth dimensions include standard anti-tip devices. Width is measured by 1" inside of wing when front-mounted on casters.

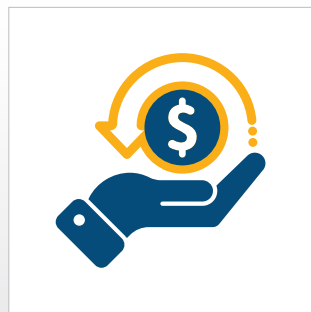
Width reduced by 1" when using casters limited to 20" high wheels on standard motor systems, lifts, Encore Rehab. Width reduced by 2" at the following motor center, Encore Rehab, LiftSide, ProLift, and Safety Feet.

brodaeating.com | 1-844-652-7632

Actual Size Guide



Installation & Maintenance Instructions



Financing



BRODA®

matrix®
SEATING SERIES

Broda USA
15455 Conway Rd, Suite 200
Chesterfield, MO 63017, USA

Broda Canada
560 Bingemans Centre Dr
Kitchener, ON N2B 3X9, Canada

brodaseating.com

info@brodaseating.com

[1-844-552-7632](tel:1-844-552-7632)



Contract #
36F79721D0039

Assistive Devices Program



Ministry of Health
Ministry of Long-Term Care